

SUMMA ROLL CUTTERS

S Class 2 Series

**World renowned vinyl
and contour cutters**

Summa

Summa.com | #SummaFinish



www.stanfordmarsh.co.uk | 01905 458000

SUMMA VINYL CUTTERS, MADE TO LAST

Summa offers two advanced vinyl roll cutting product lines based on over 30 years of experience in building the world's very best cutting plotters: the Summa S One Series and Summa S Class 2 Series.

Both series are designed on a foundation of rock-solid reliability and outstanding expertise. They feature the highest quality engineering and most advanced cutting technology to deliver high-end contour cutting accuracy for printed graphics.

A Summa vinyl cutter is your first choice roll cutter where value and reliability are top of mind. Equipped with smart technologies to help you finish your jobs flawlessly. Enjoy the easy-to-use features to tailor your cutting workflow most efficiently.



S Class 2 Series and S One Series

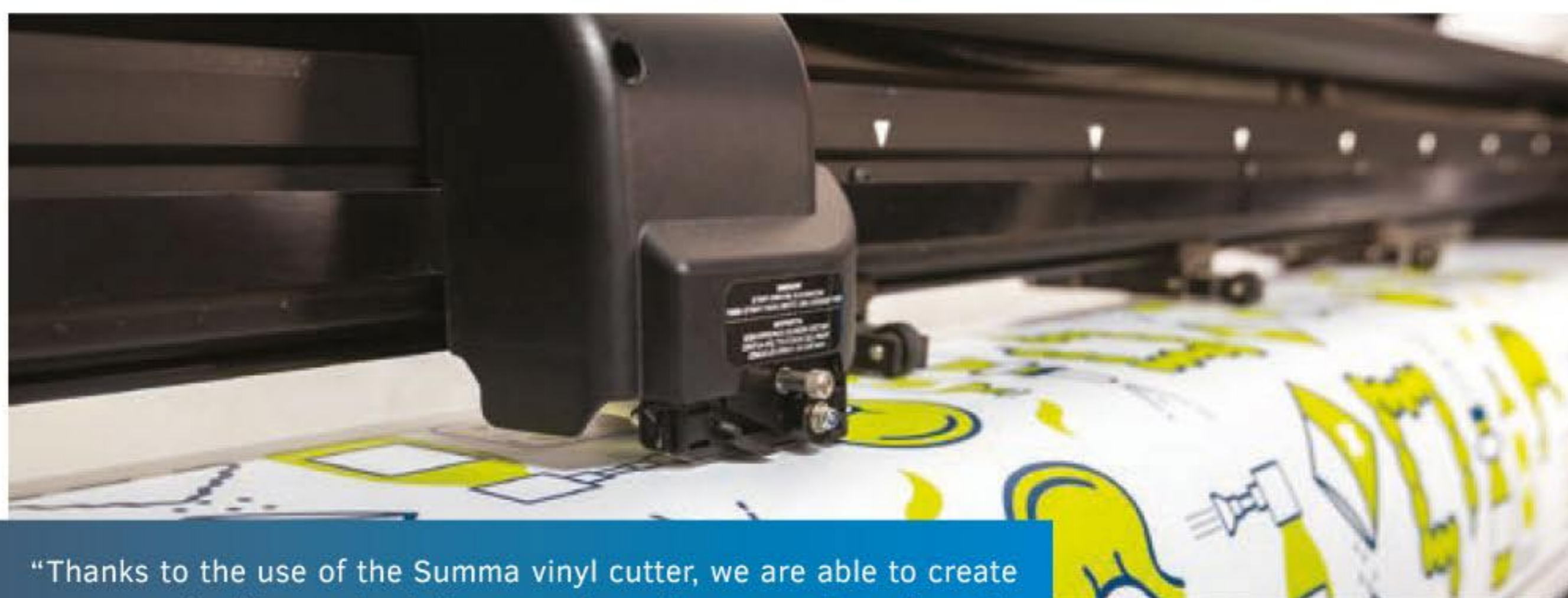
Applications

The Summa roll cutter series are designed to deliver a wide range of applications for the Sign & Display market. Achieve perfectly cut stickers, traffic signs, billboards and so on with the S Class 2 and S One roll cutters now and for many years to come!

S Sign & Display

The world of Sign and Display is broad and versatile. Summa vinyl cutting solutions can optimise your print & cut workflow, meet your customers' deadlines and deliver perfectly finished end-products.

- (One-off) Stickers
- Labels
- Window Stickers
- Vehicle lettering and graphics
- Window lettering
- Flock/Flex templates
- Intricate small letters/designs
- Technical textiles



“Thanks to the use of the Summa vinyl cutter, we are able to create new opportunities and solutions, such as the processing of nautic sails. This particular substrate is a special textile, which is very hard and rigid to print and cut. In the past, we didn't succeed in processing them properly. But thanks to Summa's expertise – in both product and service - we are now able to deliver these sails with great finishing results. ”

/ Industria Graphica FG about investing in a Summa S Class 2 T160



SUMMA S CLASS 2 SERIES, BUILT TO PROVIDE THE VERY BEST IN CONTOUR CUTTING

S Class 2™ tangential and drag-knife cutters feature first-class engineering and advanced cutting technology to deliver astonishing contour cut accuracy for even the most challenging printed graphics. Summa S Class 2 cutters are built on a foundation of rock-solid reliability and include smart features to boost efficiency in your cutting workflow and grow along with your business needs and aspirations.

Leave nothing to chance and enjoy leading-edge contour cut excellence now and for many years to come!



Summa S Class 2 Series

Level up with advanced cutting technology

The sign industry has gone through a tremendous amount of change over the years. So, your cutting equipment needs to be able to adapt and be both flexible and durable. Summa S Class 2 cutters are built on a foundation of rock-solid reliability and offer features to enhance efficiency in the cutting workflow. Like the finely-tuned suspension in a sports car, our world-renowned precision tracking system puts even more power under the hood to increase performance and yield. Combine this with a powerful dual servomotor and the S Class 2 cutter is your future-proof and reliable companion for many years to come.

From cutting all sorts of vinyl to accurate, digital die-cutting to plotting on paper and beyond, the Summa S Class 2 cutter is a do-it-all cutter with the strength to perform day in and day out. The accuracy of our European-crafted cutters is precisely what makes them so durable. Trust the processing of your expensive foils and valuable vinyl prints to our reliable S Class 2 cutters and you will not regret it. Not ever.

Key features

S Class 2™ tangential and drag-knife cutters feature the highest quality engineering and most advanced cutting technology to deliver top-notch cutting accuracy for printed graphics. A broad range of integrated and optional features further enhance your cutting workflow and production to deliver perfectly cut end products fast and efficiently.

True Tangential cutting technology

The highly-engineered tangential cutting heads on the S Class 2 T Series power through heavy sandblast, paint mask and reflective materials with incredible ease, speed and accuracy. These exclusive cutting heads provide you with unrivalled, True Tangential Technology and unmatched die-cutting precision as no other in its class.

G-Performance

The optional G-Performance mode boosts the speed and performance of digital cutting operations by up to 40%. Its impact is especially noticeable on wider substrates and faster reading of the registration marks.

Fast and accurate cutting with OPOS CAM

The camera recognition alignment solution - OPOS CAM - allows customers in volume-driven workflow environments to excel with extremely fast precision and accurate cutting of short or long run contour cutting jobs.

Summa GoSign software

Powerful in-house GoSign software, allows you to manage your preferred workflow straightforwardly and with great flexibility.

Legendary performance

Reliable material transport through Summa's legendary tracking system combined with the smart OPOS Xtra feature guarantees meticulous processing of very small sticker jobs.



SUMMA S2 75

The S2 75 is Summa's smallest vinyl roll cutter from the S2 Series and represents the ideal cutting solution for startup sign makers who want to automate their cutting workflow and extend their cutting applications.

Key Benefits

- Advanced cutting technology
- Ergonomic design
- User-friendly features
- Legendary tracking performance
- Connectivity
- Summa GoSign software

Ideal to cut:

- Reflective, holographic, mirroring materials
- In- and outdoor signage
- Traffic and advertising signs
- Safety indications
- Vehicle and window lettering



Technical Specifications

| | | |
|--|---|---|
| Model | S2 75 | |
| Dimensions | 141 x 68 x 111 cm | |
| Media Width | 6 to 84 cm | |
| Max. Working width | 74.2 cm x 50 m 'Oversized' mode allows a wider cutting area: +/-7 cm | |
| Alignment Type | <ul style="list-style-type: none"> • OPOS X - OPOS Xtra • OPOS - CAM (factory upgrade) • Barcode job recognition | <ul style="list-style-type: none"> • Up to 2 x 64 marks on the X-line • Y-Line compensation |
| Tracking Performance | 12 m max. within guaranteed specifications for media less than 760 mm | 4 m max. within guaranteed specifications for media larger than 760 mm |
| Accuracy | 0.2% of move or 0.25 mm, whichever is greater | |
| Speed | Up to 141 cm/s diagonal | |
| Acceleration | Up to 5.5 G diagonal | |
| Knife Pressure | Drag Knife: Up to 400 grams / Tangential Knife: Up to 600 grams | |
| Other Features | FlexCut (cutting through) | |
| Connectivity | Ethernet, USB | |
| Power requirements | 100-120 / 220-240 VAC, 50/60 Hz, 85 VA maximum | |
| Included software | Summa GoSign Software, Summa Cutter Control | |
| *In 'Oversized' mode the tracking performance is no longer guaranteed. | | |

Advanced Cutting Head Technology

The S2™ D Series unites legendary S Class power and precision with an efficient and affordable drag knife cutting head. The S2™ T Series features a state-of-the-art True Tangential™ cutting head, cutting with more force and accuracy than any other cutter in its class.

All S2 models are designed with premium components and show resilience to perform day in and day out.

Smart Features

The S2 Series is standard equipped with a range of convenient features, adding to the production efficiency and guaranteeing a perfectly cut product without hassle.

Enjoy an automated workflow and ease-of-use:

- Tangential or drag knife technology
- Up to 600 gr of knife pressure
- Cutting accuracy with OPOS Xtra alignment
- G-Performance
- Automation with the barcode workflow
- Up to 12 m tracking guaranteed
- Connectivity: USB, Ethernet
- Summa GoSign software



SUMMA S2 120

The S2 120 is the ideal intermediate size for many cutting jobs. All S2 models were designed on a foundation of unrivalled technology and reliability. Enjoy leading-edge cutting performance to deliver precisely cut products. Fast and straightforwardly.

Key Benefits

- Advanced cutting technology
- Ergonomic design
- User-friendly features
- Latest alignment methods
- Legendary tracking performance
- Connectivity
- Summa GoSign software

Ideal to cut:

- Reflective, holographic, mirroring materials
- In- and outdoor signage
- Traffic and advertising signs
- Safety indications
- Vehicle and window lettering



Technical Specifications

| | | |
|--|---|---|
| Model | S2 120 | |
| Dimensions | 187 x 68 x 111 cm | |
| Media Width | 12 to 130 cm | |
| Max. Working width | 120 cm x 50 m 'Oversized' mode allows a wider cutting area: +/-7 cm | |
| Alignment Type | <ul style="list-style-type: none"> • OPOS X - OPOS Xtra • Barcode job recognition | <ul style="list-style-type: none"> • Up to 2 x 64 marks on the X-line • Y-Line compensation |
| Tracking Performance | 12 m max. within guaranteed specifications for media less than 760 mm | 4 m max. within guaranteed specifications for media larger than 760 mm |
| Accuracy | 0.2% of move or 0.25 mm, whichever is greater | |
| Speed | Up to 141 cm/s diagonal | |
| Acceleration | Up to 5.5 G diagonal | |
| Knife Pressure | Drag Knife: Up to 400 grams / Tangential Knife: Up to 600 grams | |
| Other Features | FlexCut (cutting through) | |
| Connectivity | Ethernet, USB | |
| Power requirements | 100-120 / 220-240 VAC, 50/60 Hz, 85 VA maximum | |
| Included software | Summa GoSign Software, Summa Cutter Control | |
| *In 'Oversized' mode the tracking performance is no longer guaranteed. | | |

Advanced Cutting Head Technology

The S2™ D Series unites legendary S Class power and precision with an efficient and affordable drag knife cutting head. The S2™ T Series features a state-of-the-art True Tangential™ cutting head, cutting with more force and accuracy than any other cutter in its class.

All S2 models are designed with premium components and show resilience to perform day in and day out.



Smart Features

The S2 Series is standard equipped with a range of convenient features, adding to the production efficiency and guaranteeing a perfectly cut product without hassle.

Enjoy an automated workflow and ease-of-use:

- Tangential or drag knife technology
- Up to 600 gr of knife pressure
- Cutting accuracy with OPOS Xtra alignment
- G-Performance
- Automation with the barcode workflow
- Up to 12 m tracking guaranteed
- Connectivity: USB, Ethernet
- Summa GoSign software



SUMMA S2 140

The S2 140 is the ideal intermediate size for many cutting jobs. All S2 models were designed on a foundation of unrivalled technology and reliability. Enjoy leading-edge cutting performance to deliver precisely cut products. Fast and straightforwardly.

Key Benefits

- Advanced cutting technology
- Ergonomic design
- User-friendly features
- Latest alignment methods
- Legendary tracking performance
- Connectivity
- Summa GoSign software

Ideal to cut:

- Reflective, holographic or mirroring materials
- In- and outdoor signage
- Traffic and advertising signs
- Safety indications
- Vehicle and window lettering



Technical Specifications

| | | |
|---|---|---|
| Model | S2 140 | |
| Dimensions | 202 x 68 x 111 cm | |
| Media Width | 17 to 145 cm | |
| Max. Working width | 135 cm x 50 m 'Oversized' mode allows a wider cutting area: +/-7 cm | |
| Alignment Type | <ul style="list-style-type: none"> • OPOS X - OPOS Xtra • Barcode job recognition | <ul style="list-style-type: none"> • Up to 2 x 64 marks on the X-line • Y-Line compensation |
| Tracking Performance | 12 m max. within guaranteed specifications for media less than 760 mm | 4 m max. within guaranteed specifications for media larger than 760 mm |
| Accuracy | 0.2% of move or 0.25 mm, whichever is greater | |
| Speed | Up to 141 cm/s diagonal | |
| Acceleration | Up to 5.5 G diagonal | |
| Knife Pressure | Drag Knife: Up to 400 grams / Tangential Knife: Up to 600 grams | |
| Other Features | FlexCut (cutting through) | |
| Connectivity | Ethernet, USB | |
| Power requirements | 100-120 / 220-240 VAC, 50/60 Hz, 85 VA maximum | |
| Included software | Summa GoSign Software, Summa Cutter Control | |
| *In 'Oversized' mode the tracking performance is no longer guaranteed. | | |

Advanced Cutting Head Technology

The S2™ D Series unites legendary S Class power and precision with an efficient and affordable drag knife cutting head. The S2™ T Series features a state-of-the-art True Tangential™ cutting head, cutting with more force and accuracy than any other cutter in its class.

All S2 models are designed with premium components and show resilience to perform day in and day out.



Smart Features

The S2 Series is standard equipped with a range of convenient features, adding to the production efficiency and guaranteeing a perfectly cut product without hassle.

Enjoy an automated workflow and ease-of-use:

- Tangential or drag knife technology
- Up to 600 gr of knife pressure
- Cutting accuracy with OPOS Xtra alignment
- G-Performance
- Automation with the barcode workflow
- Up to 12 m tracking guaranteed
- Connectivity: USB, Ethernet
- Summa GoSign software



SUMMA S2 160

The S2 160 is Summa's largest S2 roll cutter size, offering great flexibility in the cutting workflow with the ability to process many job sizes. All S2 models were designed on a foundation of unrivalled technology and reliability. Enjoy leading-edge cutting performance to deliver flawlessly cut products. Fast and straightforwardly.

Key Benefits

- Advanced cutting technology
- Ergonomic design
- User-friendly features
- Latest alignment methods
- Legendary tracking performance
- Connectivity
- Summa GoSign software

Ideal to cut:

- Reflective, holographic or mirroring materials
- In- and outdoor signage
- Traffic and advertising signs
- Safety indications
- Vehicle and window lettering



Technical Specifications

| | | |
|---|---|---|
| Model | S2 160 | |
| Dimensions | 225 x 68 x 111 cm | |
| Media Width | 17 to 168 cm | |
| Max. Working width | 158 cm x 50 m 'Oversized' mode allows a wider cutting area: +/-7 cm | |
| Alignment Type | <ul style="list-style-type: none"> • OPOS X - OPOS Xtra • OPOS - CAM (factory upgrade) • Barcode job recognition | <ul style="list-style-type: none"> • Up to 2 x 64 marks on the X-line • Y-Line compensation |
| Tracking Performance | 12 m max. within guaranteed specifications for media less than 760 mm | 4 m max. within guaranteed specifications for media larger than 760 mm |
| Accuracy | 0.2% of move or 0.25 mm, whichever is greater | |
| Speed | Up to 141 cm/s diagonal | |
| Acceleration | Up to 5.5 G diagonal | |
| Knife Pressure | Drag Knife: Up to 400 grams / Tangential Knife: Up to 600 grams | |
| Other Features | FlexCut (cutting through) | |
| Connectivity | Ethernet, USB | |
| Power requirements | 100-120 / 220-240 VAC, 50/60 Hz, 85 VA maximum | |
| Included software | Summa GoSign Software, Summa Cutter Control | |
| *In 'Oversized' mode the tracking performance is no longer guaranteed. | | |

Smart Features

The S2 Series is standard equipped with a range of convenient features, adding to the production efficiency and guaranteeing a perfectly cut product without hassle.

Enjoy an automated workflow and ease-of-use:

- Tangential or drag knife technology
- Up to 600 gr of knife pressure
- Cutting accuracy with OPOS Xtra alignment
- G-Performance
- Automation with the barcode workflow
- Up to 12 m tracking guaranteed
- Connectivity: USB, Ethernet
- Summa GoSign software

Advanced Cutting Head Technology

The S2™ D Series unites legendary S Class power and precision with an efficient and affordable drag knife cutting head. The S2™ T Series features a state-of-the-art True Tangential™ cutting head, cutting with more force and accuracy than any other cutter in its class.

All S2 models are designed with premium components and show resilience to perform day in and day out.



S CLASS 2 SPECIFICS

All specifications applicable on the S One Series are also applicable on the S Class 2 Series. Built on a foundation of experience and commitment to offer top-of-the-line cutters to grow with your business and last for many years to come.

S Class 2 T Series

The Summa S Class 2 T Series combines S Class power and precision with a state-of-the-art True Tangential™ cutting head.

Coupled with an astonishing array of innovations and built-in capabilities, this plotter offers you to best there is in roll cutting.



Tangential Cutting Head

T Series | Tangential Cutting Head

Featuring computer-controlled blade rotation and up to 600 grams of cutting force, Summa's T Series combines the precision of a flatbed cutter with the ease and speed of a roll-fed cutter by using our legendary True Tangential cutting head. The T Series simply cuts with more force and accuracy than any cutter in its class.



Key Strengths

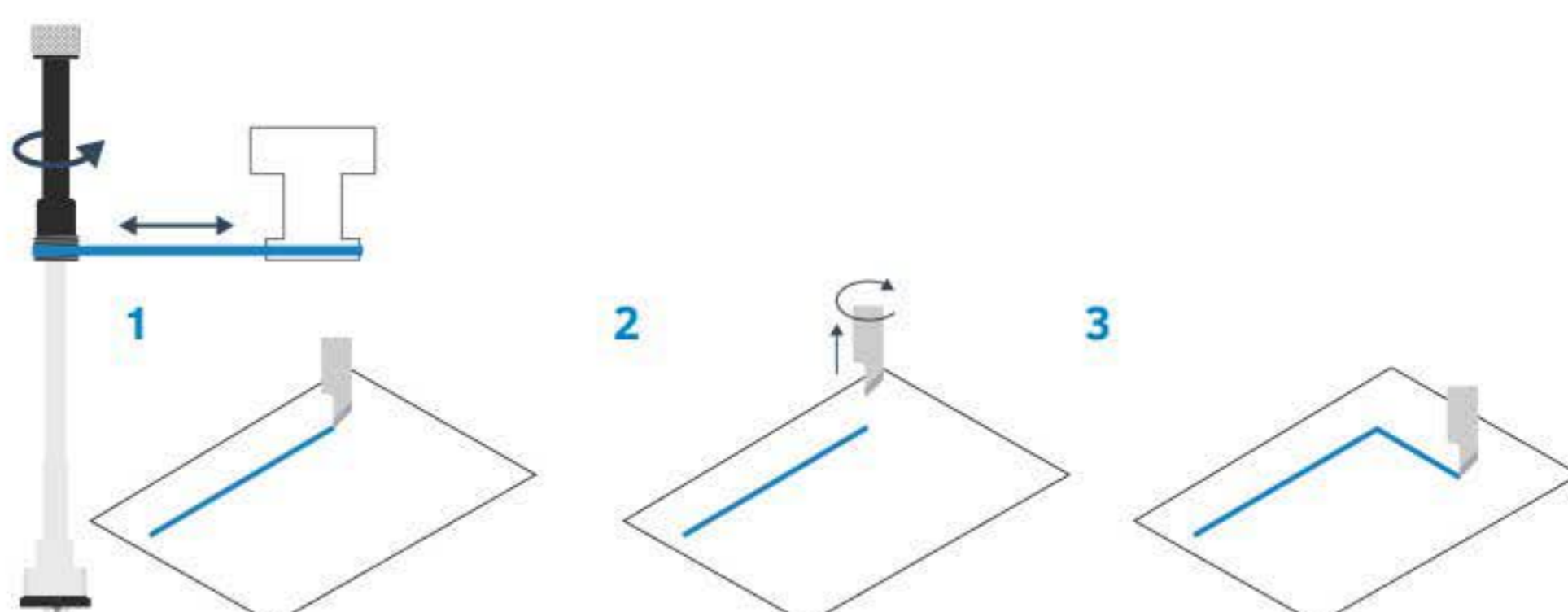
- Unique to Summa technology
- Accurate depth control
- Perfect to cut Thick, Thin and Tough material
- Accurate results in corners and the tiniest of details

Tangential movement

1 The Tangential Knife stops cutting right before a corner.

2 A motor lifts and re-orientates the blade.

3 Once the blade has reached the desired angle, it is lowered and continues to cut the corner.



S Class 2 D Series

Summa S2™ D Series vinyl cutters are specifically designed for high-volume cutting environments. They unite legendary S Class power and precision with an efficient and affordable drag knife cutting head. Boasting an astonishing array of industry-first innovations and built-in capabilities, the S2™ D Series is a do-it-all dynamo with the resilience to perform day in and day out.

S Class 2 OPOS CAM Series for S2 T75 & S2 T160

Summa's Tangential module, combined with an OPOS CAMera offers state-of-the-art registration mark recognition at lightning-fast speeds. Summa OPOS CAM roll cutters are, therefore, cutting-edge and unmatched in many Print&Cut workflows.

- Unique True Tangential cutting technology
- Higher accuracy by placing 'infield' registration marks
- Accurate fixed-size cutting with 'Fixed size mode'
- Job segmentation to preserve the best tracking performance
- Mark registration about 10 times faster than any light sensor
- Custom camera profile to process challenging media types
- Available as factory upgrade for Summa S Class 2 T75 & T160

Compatible with F Series Twin Workflow

The Summa Twin™ Workflow is an innovative cutting solution, combining the strengths of two Summa cutters – the power of an F Series flatbed cutter and the speed of an S Class OPOS CAM cutter. This combination significantly enhances productivity and performance through a smooth integration into existing workflows.



“I truly believe that the purchase of the Summa vinyl cutter back in 2016 was in many ways a good move. It helped us to reach higher quality levels, thus contributing to lift our business to the next level.”

/ Industria Graphica FG about investing in a Summa S Class 2 T160

Dual Head

As an option, the S Class 2 T Series can be equipped with a cutting head with dual functionality. This special Dual Head features an extra pen adaptor, instead of the OPOS sensor, allowing you to work alternately with each tool.

The perfect solution for drawing and cutting patterns in one easy step!



G-Performance Mode

This mode is especially designed to enhance the speed and performance of digital finishing operations on the S2 roll cutters up to 40%. The advantages include faster cutting speeds on wider substrates and faster reading of the registration marks. Especially within large industrial environments, this G-performance mode will prove its worth and give your overall workflow a serious boost.



Summa FlexCut

Summa's FlexCut feature enables you to cut simple designs completely through the material. Alternately, one length is cut completely through the material, and one length is cut halfway through. This way a kind of tear-off line is created, ensuring the material keeps a certain rigidity during transportation through the Summa cutter, while remaining easy to remove from the design afterwards.



Material Transport

A smooth transportation of the material is undoubtedly one of the most important issues when vinyl cutting. The exclusive Summa MicroSprocket drive drum tracks full rolls without skewing. This way, absolute cutting accuracy is guaranteed up to 12 meters in length, enabling to cut long or various designs subsequently without the need to reload. Durable titanium coated grit rollers assure job continuity for many years to come with the best tracking system available on the market.

Media Options

A servo-powered roll-up system for S2 140 & S2 160

After a job is finished, the system will roll up the artwork neatly and prepare the machine for the next unattended job. The integrated paneling feature splits long-length runs into shorter consecutive jobs, allowing to cut complete rolls unattended and deliver the output nicely rolled-up.



Servo-powered roll-up system

A solid, most effective media rack for S2 140 & S2 160

Store your media rolls effectively and keep your work environment neat and tidy with the optional media rack. Note: The roll-up system and the media rack cannot be combined.

Extra pinchrollers

Extra pinchrollers can be factory installed when required at the factory or with your Summa reseller (middle pinch roller only).



Media rack

Registration Marks (OPOS Contour Cutting)

Summa's automated contour alignment system OPOS stands for Optical Positioning System. The OPOS sensor registers printed squares that are placed around the graphic. This allows OPOS to determine the exact position of the printed graphic and enables you to die-cut valuable printed and laminated vinyl graphics with complete confidence and ease.

OPOS X

The OPOS X feature, standard on all Summa models, automatically looks for the cross marks by using a sensor. The possibility to use multiple cross marks is a unique OPOS feature and guarantees the best possible accuracy. The OPOS X sensor even detects registration marks through dense laminated graphics with uneven texture and brings contour cutting to a much higher level.

OPOS XY / OPOS XY2

OPOS XY allows to measure a line across the print width, additionally to the OPOS marks. This will automatically adjust media curvature or deformation across the width of the print. The OPOS XY2 alignment method adds an extra measurement line at the rear of the print, allowing to compensate for any changes in print curvature between start and finish of your print job.

OPOS Barcode

The barcode reading functionality is a productivity tool, allowing to process multiple jobs without operator intervention. Also, the risk of sending the wrong data to the wrong print no longer exists. The OPOS X sensor reads the barcode and sends the correct job to the computer. The computer returns the matching cutting information which is then processed by the cutter. When the job is finished, the cutter automatically starts looking for the next job and its barcode.

OPOS Xtra

A next evolution in OPOS is OPOS Xtra. This alignment mode is designed to handle irregular material deformation over the length of the print by adding additional XY lines between the designs. This increases the accuracy and alignment methodology for smaller stickers.



OPOS X



OPOS XY



OPOS XY2



OPOS Xtra

OPOS alignment systems are available for all models

TECHNICAL SPECIFICATIONS

| Model | S2 75 | S2 120 | S2 140 | S2 160 |
|--|--|-------------------|---|-------------------|
| Dimensions | 141 x 68 x 111 cm | 187 x 68 x 111 cm | 202 x 68 x 111 cm | 225 x 68 x 111 cm |
| Media Width | 6 to 84 cm | 12 to 130 cm | 17 to 145 cm | 17 to 168 cm |
| Max. Working width Oversized mode* | 74.2 cm x 50 m | 120 cm x 50 m | 135 cm x 50 m | 158 cm x 50 m |
| | 'Oversized' mode allows a wider cutting area : +/- 7 cm* | | | |
| Pinchrollers | 2 | 3 | 4 | 4 |
| Alignment Type | <ul style="list-style-type: none"> OPOS X - OPOS Xtra OPOS CAM : Factory upgrade on new Summa S Class 2 S75T and S160T | | <ul style="list-style-type: none"> Barcode jobrecognition Up to 2 x 64 marks on the X-line Y-Line compensation | |
| Tracking Performance | Within +/- 0.1 mm on plots: <ul style="list-style-type: none"> up to 12 m long on rolls up to 760 mm wide* up to 4 m long on rolls over 760 mm wide* | | | |
| Accuracy | 0.2% of move or 0.25 mm, whichever is greater | | | |
| Speed | Up to 141 cm/s diagonal | | | |
| Acceleration | Up to 5.5 G diagonal | | | |
| Knife Pressure | Drag Knife: Up to 400 grams / Tangential Knife: Up to 600 grams | | | |
| Other Features | FlexCut (cutting through) | | | |
| Connectivity | Ethernet, USB | | | |
| Power requirements | 100-120 / 220-240 VAC, 50/60 Hz, 85 VA maximum | | | |
| Included software | Summa GoSign™ Software, Summa Cutter Control, MacSign™ Cut Cutting Software | | | |
| *In 'Oversized' mode the tracking performance is no longer guaranteed. | | | | |



S2 75

S2 120

S2 140

S2 160

| Summa Vinyl Cutters Comparison | | S One FX Series | S One Series | S Class 2 D series | S Class 2 T series | S Class 2 OPOS CAM series |
|--------------------------------|------------|-----------------|--------------|--------------------|-----------------------|---------------------------|
| Maximum Media Width | 60 | - | 70.5 cm | - | - | - |
| | 75 | - | - | 84 cm | 84 cm | 84 cm |
| | 120 | - | 135 cm | 130 cm | 130 cm | - |
| | 140 | 142 cm | 150 cm | 145 cm | 145 cm | - |
| | 160 | - | 169 cm | 168 cm | 168 cm | 168 cm |
| Cutting Technology | Drag Knife | | Drag Knife | Drag Knife | True Tangential Knife | True Tangential Knife |
| Opos X | ✓ | ✓ | ✓ | ✓ | ✓ | |
| Opos Xtra | ✓ | ✓ | ✓ | ✓ | ✓ | |
| Camera | - | - | - | - | ✓ | |
| Barcode Support | ✓ | ✓ | ✓ | ✓ | ✓ | |
| Roll-up | - | - | - | Optional | Optional | Optional |
| Velocity | ** | *** | ***** | ***** | ***** | |
| Flexible Working Sizes | - | ✓ | ✓ | ✓ | ✓ | |



SUMMA IN-HOUSE DEVELOPED SOFTWARE

The Summa GoSuite software platform has been developed in-house to enable users to make the most of their print and cut workflow. With the Summa software, operators, designers and business owners, can easily process and analyse complex and high volume jobs with great flexibility.

Rely on powerful software to maximise the use of your Summa cutting equipment.



Summa GoSign™

GoSign is your first choice cutting software designed for the Summa roll cutters. It allows you to manage your preferred workflow with great flexibility. Enjoy automated cutting options, custom configuration of action sets, easy plug-ins for design programs and much more.



The software GoSign that comes with the machines includes many features to keep you going and will expand further in the future. For a small additional charge, a Pro pack can be purchased, providing even more functionality to accommodate to your growing business.

- Modern interface
- Improved navigation
- Quick and intuitive
- Customised to your needs
- Standard available on website
- Pro Pack option available

Build a cutting workflow to your preference

- Workflow automation, minimising operator intervention substantially.
- Increased flexibility with the option to cut directly from Adobe Illustrator or CorelDRAW.
- Material manager with your most commonly used materials and the possibility to add other material types along the way.
- Enhanced file compatibility, providing perfect synergy between hardware and software.
- Choose your preferred import method – by colour or by layer name.
- Availability of job log functionality, adding to the Summa roll cutters Industry 4.0 compatibility.
- Compatible with: DXF files, PLT files, files from open source design programs, such as Inkscape and many more.
- Customise action sets tailored to your specific workflow needs.

TIP | Scan the QR code to watch the GoSign video on Summa’s Youtube page.

GoSign™ Pro Pack

The optional GoSign Pro Pack offers you advanced features such as barcode functionality, hot folder support and import possibility of plot files. Similar to the standard GoSign software, also the Pro Pack will be gradually expanded with new functionalities.

| GoSign 2.0 | GoSign 2.0 Pro Pack |
|--|--|
| Standard available on www.Summa.com | One-time Pro version purchase (395-995) |
| • All common functionalities specific to cutting programs: sorting, weeding box, multi-copy, ... | • All common functionalities specific to cutting programs: sorting, weeding box, multi-copy, ... |
| • Custom configuration of action sets | • Custom configuration of action sets |
| • Plug-ins for Adobe Illustrator and CorelDRAW | • Plug-ins for Adobe Illustrator and CorelDRAW |
| • Material Manager | • Material Manager |
| • Job log functionality | • Job log functionality |
| | • Camera recognition |
| | • Twin workflow |
| | • Barcode functionality |
| | • Hot folder job handling |
| | • Import of plot files |

Product Registration

Summa recommends users to register their products online. Upon registration of your Summa products, you can activate several features such as the G-Performance, barcode, and so on. Also, in the registration form, you can choose to tick the box if you want to receive our monthly newsletter. This way, you can stay up to date with Summa's latest products and features that might complement your cutting equipment.

All Summa products can be registered through the Summa website:
www.Summa.com/support/product-registration

Inspiring Customer Stories

Customer stories capture an extensive range of end-user experiences. Experiences they gain by operating our Summa cutting equipment daily, week in week out, year in year out. These stories will help you in obtaining a better understanding of the many reasons why a Summa product might just be the game changer you were looking for to bring your cutting workflow to the highest possible level.

Customer stories go beyond product leaflets, brochures and other presentations. These real-life views and opinions from people in the field are the actual depiction of a product's benefits as shown in a true production area. So, go ahead and read our blog, which is filled with inspiring customer stories to create innovative and striking applications with our Summa equipment that fits your every cutting need!

Blog: www.Summa.com/blog

Testimonial | Stickers and Posters.com

"WE WOULDN'T BE ABLE TO RUN SUCH INCREDIBLE PRODUCTION WITHOUT THE SUMMA VINYL CUTTERS."

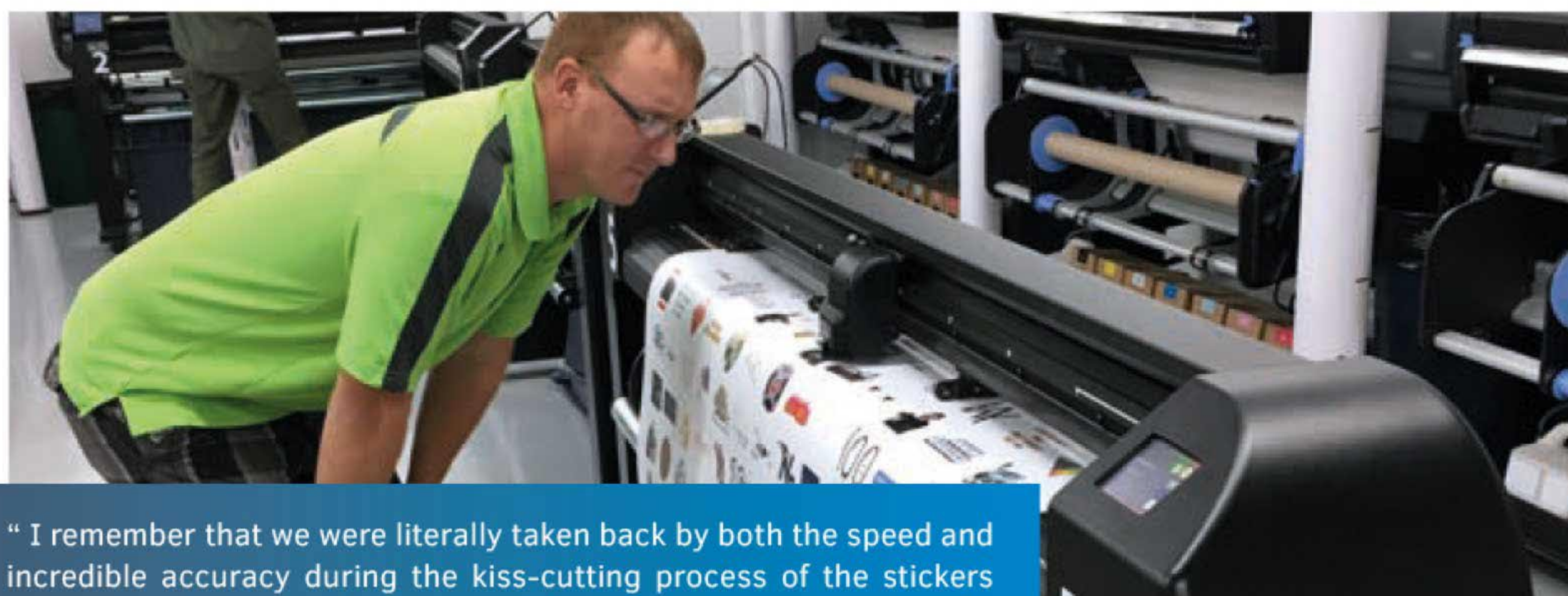
Company: Stickers and Posters.com

Core business:
One-off-design stickers

Challenge:
Fast cutting in high volume

Solution: 6 Summa S Class 2 T160

The Story | Each day, thousands of 'one-off-design' stickers go through production at lightning speed. Customer demand for stickers and posters increased dramatically along with the growing online market. A great business opportunity. So, Stickers and Posters decided to invest in 6! S Class 2 T160 cutters with the True Tangential cutting technology to meet and exceed customer expectations. With this purchase, they are now able to finish out-of-the-box tasks, perfectly tailored to their customers' needs.



" I remember that we were literally taken back by both the speed and incredible accuracy during the kiss-cutting process of the stickers on the S Class 2 vinyl cutter model. More so, we appreciate the ease of set-up and operation efficiency with the onboard tracking mechanism, combined with the ability to work continuously. So, ultimately we paired up a Summa S2T160 vinyl cutter to each of the HP latex printers to keep the workflow equal and smoothly flowing."

/ Stickers and Poster about investing in 6 Summa S Class 2 T160