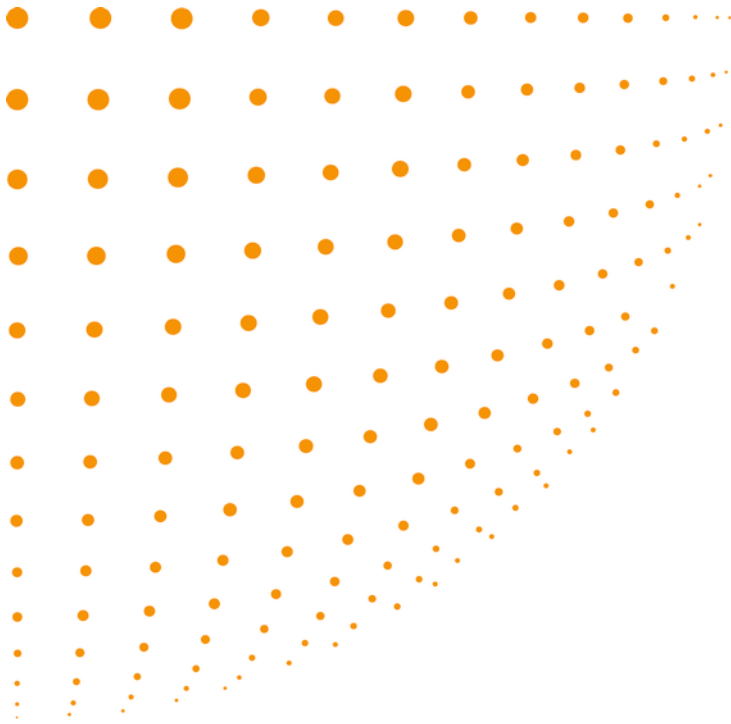


RICOH

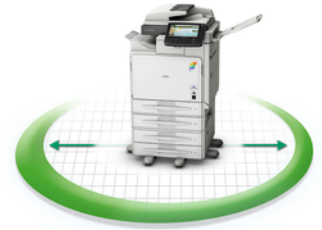
Compact, economical multifunctionals



Aficio™ MP C300/MP C300SR/MP C400/MP C400SR

Save space, energy and costs

The Aficio™MP C300/MP C300SR/MP C400/MP C400SR are productive, user-friendly solutions that are exactly what your office workflow requires. These compact colour multifunctionals copy, print, scan and fax efficiently and at high speed, with automatic duplex printing as standard. The MP C300SR/MP C400SR even staple your documents automatically. For maximum user convenience, the large colour touch-panel can be tilted to improve visibility. These devices smoothly integrate into your existing network and offer a low Total Cost of Ownership thanks to Quick Start technology and low power consumption.



- Print from USB memory or SD card.
- Excellent productivity: 30/40 pages per minute.
- Highly customisable via App2Me and Ricoh Widgets.
- User-friendly operation.
- Low Total Cost of Ownership.

Effective solutions



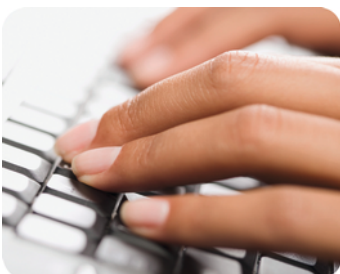
RAISE THE PACE

50 to 60 seconds. That is all it takes for the Aficio™MP C300/MP C300SR/MP C400/MP C400SR to be ready for use. Colour and monochrome are printed at the same high speed of 30 (MP C300/MP C300SR) and 40 (MP C400/MP C400SR) pages per minute. And with a maximum paper capacity of 2,300 sheets, you enjoy long, undisturbed runs.



IMPROVE YOUR WORKFLOW

Distribute documents quickly by scanning to e-mail, FTP, SMB, URL or NCP. There is no need to switch on your computer: print directly from USB memory or SD card. Fax, e-mail, scan to folder and USB – all in one action.



GET PERSONAL

The Aficio™MP C300/MP C300SR/MP C400/MP C400SR come pre-installed with Ricoh's App2Me software platform. This innovative platform runs Widgets which enable mobile users to personalise their interaction with the MFP. These Widgets are automatically detected by any App2Me-ready MFP once they are installed on a connected PC, laptop or compatible smart phone. They are displayed directly on the MFP's display panel, providing fast access to the latest tools and applications.



KEEP COSTS DOWN

With their low Total Cost of Ownership, the Aficio™MP C300/MP C300SR/MP C400/MP C400SR will save you money. Their Quick Start-up technology allows them to make maximum use of the energy-saver mode. As a result, their energy consumption is remarkably low. Your paper expenses are reduced with a standard automatic duplex unit.



EASY OPERATION

The Aficio™MP C300/MP C300SR/MP C400/MP C400SR have been designed with their users' convenience in mind. Lightweight yet sturdy paper trays open and close smoothly. The operation panel can be tilted to improve visibility. The large colour touch-panel has a supremely user-friendly graphic user interface. Implementing jobs by changing detail settings like number of copies, B/W or F/C, duplex or simplex, is quick and easy, also from your computer.

SECURE WORKFLOWS

Exert control: ask authentication, lock prints, or hold them until a password is entered. Secure copy data: mask text, or prohibit the use of certain functions via the optional Copy Data Security Unit. Keep a close eye on colour usage by setting and managing the output of individuals and groups with quota setting.



ENVIRONMENTALLY FRIENDLY

At Ricoh we help you lower the environmental impact in your office as well as lowering your cost. The Aficio™MP C300/MP C300SR/MP C400/MP C400SR have eco-friendly and money-saving features such as fast duplex printing and copying, ultra low sleep mode, increased toner yield and low TEC (Typical Electricity Consumption). In addition, Ricoh products are Energy star compliant. This means less CO2 is produced in providing the energy needed to run Ricoh devices.

Aficio™ MP C300/MP C300sR/MP C400/MP C400sR

COPIER

Copying process:	Dry electrostatic transfer system with dual component development; 4-drum method
Copy speed:	Full colour: 30/30/40/40 copies per minute B/W: 30/30/40/40 copies per minute
Multiple copy:	Up to 999
Warm-up time:	50/50/60/60 seconds
First output speed:	Full colour: Less than 15 seconds B/W: Less than 10 seconds
Zoom:	25 - 400% (in 1% steps)
Memory	
Paper input capacity:	Maximum: 1.5 GB + 160 GB Hard Disk Drive Standard: 1 x 550-sheet paper tray 100-sheet bypass tray Maximum: 2,300 sheets
ARDF capacity:	50 sheets
Paper output capacity:	Standard: 500/250/500/250 sheets Maximum: 650/300/650/300 sheets
Paper size:	Paper trays: A4 Bypass tray: 216 x 600 mm
Paper weight:	Paper trays: 52 - 220 g/m ² Bypass tray: 52 - 256 g/m ² Duplex tray: 60 - 163 g/m ²
Duplexing:	Standard
Dimensions (W x D x H):	550 x 570 x 710 mm (incl. ARDF)
Weight:	Less than 80/85/80/85 kg
Power source:	220 - 240 V, 50 - 60 Hz
Power consumption:	Maximum: Less than 1.65 kW

PRINTER

CPU:	Celeron M (1 GHz)
Print speed:	Full colour: 30/30/40/40 prints per minute B/W: 30/30/40/40 prints per minute
Printer language:	PCL5c, PCL6, Adobe® PostScript® 3™, XPS
Printer resolution:	600 x 600 dpi (1, 2, 4 bit) 1,200 x 1,200 dpi (1 bit)
Memory:	1 GB + 160 GB Hard Disk Drive
Interface:	Standard: USB 2.0 (Type A & B), 10 base-T/ 100 base-TX Ethernet Option: 1000 base-T Gigabit Ethernet, Wireless LAN (IEEE802.11 a/g)
Network protocol:	TCP/IP (v4, v6), Bonjour
Supported environments:	PCL5c, PCL6: Windows® 2000/XP/Vista/7/ Server 2003/Server 2008/Server 2008R2, Citrix Metaframe XP/Presentation Server3.0, Presentation Server4.0/4.5, Citrix XenApp5.0 Adobe® PostScript® 3™: Windows® 2000/ XP/Vista/7/Server 2003/Server 2008/Server 2008R2, Citrix Metaframe XP/Presentation Server3.0, Presentation Server4.0/4.5, Citrix XenApp5.0, Macintosh OS 10.2x/10.4.x/10.5x XPS: Windows® Vista/7/Server 2008/Server 2008R2

SCANNER

Scan speed:	Full colour: 30 images per minute B/W: 30 images per minute
Resolution:	Standard: 100 - 600 dpi Default: 200 dpi
Original size:	A5 - A4
Output formats:	TIF, JPEG, PDF
Bundled drivers:	Network, TWAIN
Scan to e-mail:	SMTP authentication, POP before SMTP authentication
Destination addresses:	Maximum per job
Stored destination addresses:	Maximum 2,000
Address book:	Via LDAP or locally on HDD
Scan to folder:	SMB, FTP, NCP
Destination:	Maximum folders per job

SOFTWARE

SmartDeviceMonitor™, Remote Communication Gate S Pro™, Web Image Monitor, DeskTopBinder™ Lite, App2me

FAX (OPTION)

Circuit:	PSTN, PBX
Compatibility:	ITU-T, G3
Modem speed:	Maximum: 33.6 Kbps
Resolution:	Maximum: 400 x 400 dpi
Compression method:	MH, MR, MMR, JBIG
Scanning speed:	0.8 seconds (200 x 100 dpi A4 SEF)
Memory backup:	Yes

OTHER OPTIONS

1 x 550-sheet paper tray
2 x 550-sheet paper tray
Inner one bin tray (MP C300/MP C400 only)
Side tray
Output tray
Fax memory unit
Fax unit
HDD Encryption unit
Wireless LAN (IEEE802.11 a/g), 1000 base-T Gigabit Ethernet
Copy Data Security Unit
Remote communication gate
Data Overwrite Security Unit
Key counter interface unit
File Format Converter
Browser unit

Ricoh has designed these products to meet EC ENERGY STAR guidelines for energy efficiency.

For availability of models, options and software, please consult your local Ricoh supplier.

ISO9001 certified, ISO14001 certified

All brand and/or product names are trademarks of their respective owners. Specifications and external appearance are subject to change without notice. The colour of the actual product may vary from the colour shown in the brochure. The images in this brochure are not real photographs and slight differences in detail might appear.

Copyright © 2009 Ricoh Europe PLC. All rights reserved. This brochure, its contents and/or layout may not be modified and/or adapted, copied in part or in whole and/or incorporated into other works without the prior written permission of Ricoh Europe PLC.

www.ricoh-europe.com



RICOH

For more information, please contact

STANFORD MARSH
STANFORD MARSH GROUP

www.stanfordmarsh.co.uk
info@stanfordmarsh.co.uk | 0844 856 0701