

RICOH

**The High Volume
Document Production Tool**



Aficio™ MP 9000

Power up your Production Workflow

Anticipating client needs is crucial in the production environment. To help you handle your jobs in the most efficient way, Ricoh – market leader in the light and mid production market – provides you with a total workflow solution. From preparation to finishing of each job. At the core of this workflow, Ricoh presents the Aficio™MP 9000: a user based powerhouse built to optimise your day to day life. Set to meet and exceed your and your customer's every demand, the MP 9000 unites a wealth of unique capabilities. Ready to face any high volume challenge coming your way!

- Outstanding simplex and duplex productivity at 90 pages per minute
- Large colour touch screen for easy viewing of stored documents
- 1 touch switch to user screen for inexperienced users
- Impeccable output quality at true 1,200 x 1,200 dpi
- Exceptional A3 capacity and colour scanning
- Heavy duty design, built for peak volumes up to 1.2 million pages per month
- Unique professional online finishing capabilities
- Advanced document management and cost accounting utilities
- Up to 9 paper feed stations and 8,500-sheet maximum capacity
- Full colour scanning at 80 images per minute



Meeting your Specific Professional Demands

Every work environment has its own exact requirements, so does yours. While productivity may be on top of your list, reliability might be more important for other market segments.

The Aficio™MP 9000 transcends primary needs and focuses on the entire picture. Multifunctional in every sense of the word, this high volume powerhouse addresses your precise challenges.

Educational Efficiency

As member of a modern educational establishment, you face:

- cost and productivity related challenges
- users with varied experience in operating high volume equipment
- high demands for quality handouts, study guides and exams

The Aficio™MP 9000 offers you:

- less labour intensive and more user friendly document creation
- budget friendly production of professionally finished materials

High Office Productivity

In your busy office environment, you:

- deal with tight deadlines and varied requests
- have to work smarter and simply cannot afford to waste time

The MP 9000 meets your every demand while:

- quickly handling all reports, booklets and newsletters
- boasting easy job programming and taking the complexity out of high volume

CRD Versatility

As professional in a central reproduction department you:

- are responsible for the documents that make your company stand out
- have to meet all the requests that come your way every day

With the MP 9000 you obtain:

- 1,200 dpi image quality and 0.5 mm registration accuracy
- fast, reliable equipment to keep you up and running

Exceeding Commercial Print Standards

To increase your customer's satisfaction, you like to:

- have equipment that both experienced and inexperienced operators can use
- hit deadlines and depend on reliable equipment
- differentiate and stay ahead of the competition

The MP 9000's strengths:

- efficient job storage for on-demand printing and easy job retrieval
- minimal operator intervention and non-stop operation at 90 ppm
- professional online finishing tools without compromising on speed



Take Full Control of your Document Processing

In today's fast-moving economy you need an all-encompassing strategy to make it. Built to cover every step of your workflow, the Aficio™MP 9000 is bound to improve the performance of your organisation. From easy job preparation to finishing and accounting, this workhorse goes way beyond any conventional printing device.

Easy Electronic/Digital Input

The Aficio™MP 9000 takes the complexity out of high volume:

- job programming in a few screen touches via the colour LCD panel
- simplified display for inexperienced users
- easy browsing through stored data using list/thumbnail view
- clear animation guidance in case of irregularities

FOR POSITIONING ONLY



Finish Professionally

- unique stapling capabilities
- automatic punching for all popular wire-binding styles
- booklet making & book folding

FOR POSITIONING ONLY



FOR POSITIONING ONLY

Smart Storage

All jobs can be stored for print on-demand whether it regards an electronic file, scanned file or combination of both.

Settings are included too which eliminates reprogramming if a client orders more copies later. Viewing stored files is important for easy finding and editing without printing.

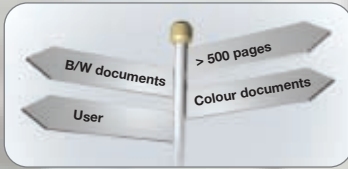
Efficient Editing

Professionally edit and enhance documents using the optional DeskTopEditor For Production:

- deskew and despeckle
- make changes page by page or as a total set
- remove punch holes and grey margin areas, reduce noise
- combine files from different sources and formats (and store)

doc-Q-manager Workflow Software

- job ticketing of print jobs
- variable data printing
- job splitting over multiple engines, print queue managements

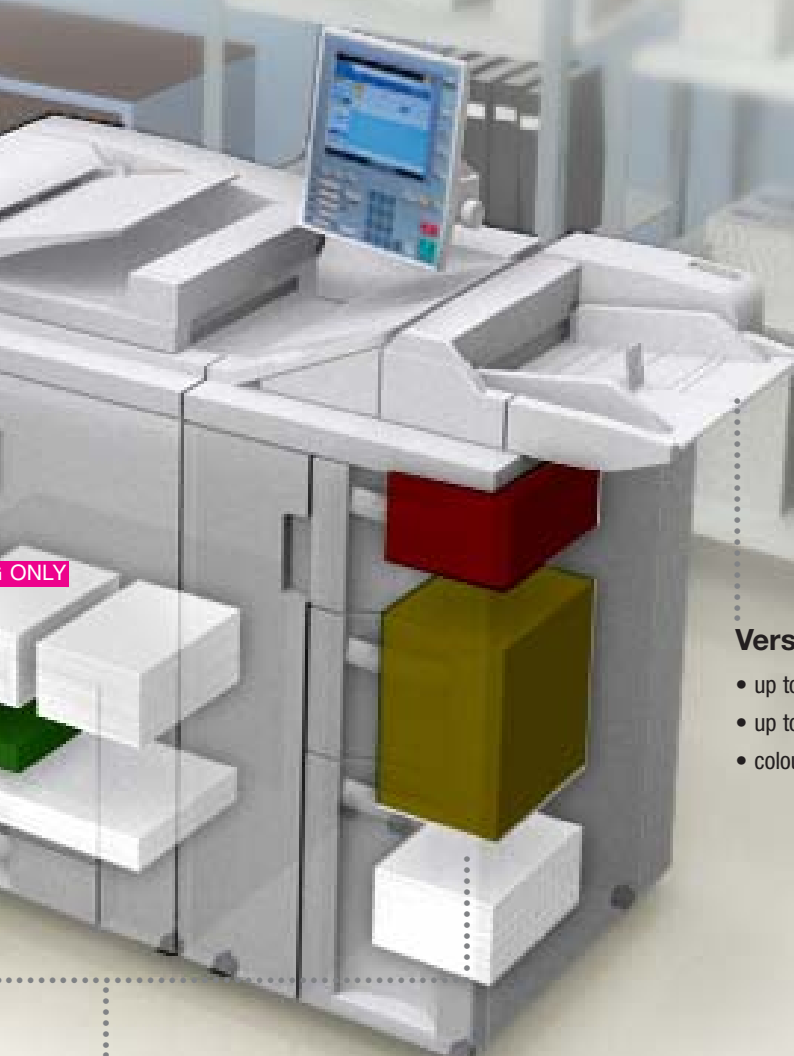


Customer Specific Applications

Featuring the Java™ (J2ME™) compatible Embedded Software Architecture™, Aficio™ devices boast unique customisation possibilities. By running specific key applications, you obtain total integration in your business infrastructure. For more information, please visit www.ricoh-developer.com.

Web Based Remote Monitoring

Remotely check the device status, manage networked systems and restrict usage if necessary: it can all be done from your desktop using Web SmartDeviceMonitor™ and Web Image Monitor.



Versatile Scanning

- up to 100 single or double-sided originals
- up to 2,000 originals can be fed using Batch mode
- colour scanning



FOR POSITIONING ONLY

Uninterrupted Production

- a maximum paper capacity of 8,500 sheets
- 9 different paper sources and automatic tray switching
- load while run convenience for paper, new jobs and toner
- impressive output capacity
- 2 toner bottles for a total of 120,000 A4 pages
- duplexing at full engine speed (90 ppm)

Effective Cost Accounting

Cost allocation made transparent. Using the Equitrac Office™ and MicroPress® software, you have the tools to accurately keep track of all print/copy costs and allocate them to the appropriate department/customer.

Document Processing for Every Environment

As professional you know what it takes to make your business grow: equipment that copes with your daily workloads and handles peak loads. For large departments with many different users, easy operation and a minimum on user errors will be more important. Depending on your workflow,

Ricoh offers a variety of controllers, designed to meet specific requirements. Choose the controller that fits you best to ensure optimum performance from your Aficio™MP 9000.

Embedded Controller

With the entry level embedded controller, you have full access to all the MP 9000's capabilities without extensive training. Featuring Ricoh's unique printer language RPCS™ and its icon based interface, creation of print jobs is only a click away. With the genuine Adobe® PostScript® 3™ module you can obtain the exact output you specified: fast and reliable.

Fiery® EB-135 for Extended Print Performance*

The powerful external controller EB-135 offers full Fiery® functionality and incorporates a variety of utility programs such as Command Workstation to print in record time. Offering easy job composition, job queue monitoring and new features such as hot folders to automate your workflow, this controller gives you the power to meet any demand.

- straightforward printing of genuine Adobe® PostScript® files, complex graphics and variable data output
- fast ripping of heavier (PDF) files
- easy integration into existing Fiery® workflow of the MP 9000

DeskTopEditor For Production

Ricoh's entry level editing solution allows you to easily edit, despeckle, deskew your files both page by page, or as an integral file. You can also combine paper and electronic documents and print or save them as one document.

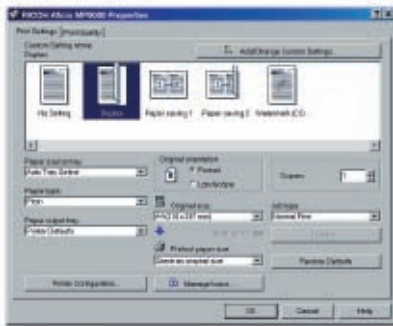
doc-Q-manager

This entry level workflow solution offers you powerful features such as job ticketing, job queue management, job splitting as well as merging variable data with a pre-formatted document. You can also expand this software solution in such a way that print jobs will be re-routed to the output device that is most efficient to print for optimised print costs.

MicroPress® for Maximum Productivity*

The MicroPress® option consists of a very powerful controller and a complete workflow solution in one package. It offers advanced scanning, job composition and production printing capabilities. It is available for a single engine, but also to steer multiple engines including clustering features and/or a combination of colour and black and white documents. MicroPress® offers a wealth of editing features: you can program each print job from your desktop and afterwards send it to the machine. Ideal for printing on-demand as data is stored in a post-RIP format which saves ripping time.

* For availability, please check with your local supplier.



With Ricoh's unique printer language RPCS™ and its icon-based interface, any print job can be set in seconds.



Ricoh's entry level editing solution DeskTopEditor For Production allows you to easily edit, despeckle and deskew your files both page by page, or as an integral file.

Perfectly Finished Output

While finishing makes your documents look even better, it is also one of the most labour intensive daily tasks. Let the Aficio™MP 9000 take over tedious manual tasks and automatically create high quality finished documents in a fraction of the time it used to take! The MP 9000 meets your demands with a whole wealth of online professional options.

A Variety of Possibilities

Clients expect first class presentation materials, professional reports and great looking brochures. The Aficio™MP 9000's range of online finishing capabilities handle punching, stapling, folding, saddle stitching and booklet making. You can even include up to 9 different kinds of paper in one job. Everything you need to add value to the documents you produce and differentiate your business!

Eye Catching Booklet Making

Impress your clients with state-of-the-art booklets. Connect the BK5010 booklet maker and TR5010 trimmer to produce accurate and sharp folded A5 and A4 booklets. This sophisticated booklet making solution, which can be used in both online and offline conditions, automatically folds and saddle stitches booklets of up to 120 pages.



Online Book Folding

- automatic creation of square back booklets with the same look and feel as perfectly bound books

Exceptional Cover Insertion

- insertion of colour or pre-printed front and back cover for product catalogues, user manuals and brochures with the dual station cover feeder

Ready to Bind Documents

Forget about manually punching documents offline and hand loading each individual lift of paper into a separate table top punch. With the matching GBC StreamPunch™ III unit you obtain perfectly punched and ready to bind documents at the touch of a button.

Advanced Z-folding

Including A3 charts and tables in an A4 presentation is very straightforward. The handy Z-folder unit automatically folds A3 sheets into A4, or A4 documents into A5 and allows for the seamless integration of larger sheets in smaller sized sets. The simple answer to complex jobs.



Create perfectly punched and ready to bind documents at the touch of a button and conveniently insert larger sheets into smaller sized sets.



The Aficio™MP 9000's range of online finishing capabilities handle punching, stapling, folding, saddle stitching and booklet making.



Aficio™ MP 9000

Specifications



COPIER

Copying process:	2 x 4-way laser diode array & electro photographic printing	
Copy speed:	90 copies per minute	
Resolution:	Output: 1,200 dpi/scan: 600 dpi	
Multiple copy:	Up to 9,999	
Warm up time:	Less than 360 seconds	
First output speed:	3.5 seconds	
Zoom:	25 - 400% (in 1% steps)	
Memory:	Hard Disk Drive:	320 GB (2 x 160 GB)
Paper input capacity:	Standard:	2 x 1,000-sheet tandem trays 2 x 500-sheet paper trays
	Maximum:	8,500 sheets
Paper output capacity:	Maximum:	3,000 sheets
Paper size:	Minimum:	100 x 140 mm
	Maximum:	330 x 458 mm
Paper weight:	52 - 216 g/m ²	
Duplexing:	Standard	
Dimensions		
(W x D x H):	870 x 860 x 1,476 mm	
Weight:	Less than 305 kg	
Power source:	220 - 240 V, 50/60 Hz	
Power consumption:	Maximum:	Less than 3.5 kW

PRINTER/SCANNER (option)



Printer

Print speed:	90 prints per minute	
Printer language/resolution:	Standard:	300/600 dpi
	PCL5e:	600/1,200 dpi
	PCL6:	200 - 1,200 dpi
	Option:	Adobe® PostScript® 3™:
		600/1,200 dpi
Interface:	Standard:	Ethernet 10 base-T/100 base-TX USB 2.0
	Option:	Bi-directional IEEE 1284 FireWire (IEEE 1394) Wireless LAN (IEEE 802.11b) Gigabit Ethernet Bluetooth USB Host
Memory:	Standard:	512 MB
		with additional 256 MB
	Hard Disk Drive:	320 GB (2 x 160 GB)
Network protocol:	TCP/IP, IPX/SPX, SMB, EtherTalk (Auto Switching)	

Supported networks:	Windows® 95/98/Me/NT4.0/2000/XP/Server 2003
	Novell® NetWare® 3.12, 3.2, 4.1, 4.11, 5.0, 5.1, 6, 6.5
	UNIX Sun® Solaris 2.6/7/8/9, HP-UX 10.x/11.x
	SCO OpenServer 5.0.6
	RedHat® Linux 6.x/7.x/8.x
	IBM® AIX v4.3/5L v5.1
	Macintosh 8.6 - 9.2.x (OS X Classic), Macintosh X v10.1 or later (native mode)
	IBM® System i5™ HPT mySAP™ ERP 2004



Scanner

Scan speed:	80 originals per minute (A4)	
Resolution:	100 - 1,200 dpi (B/W and full colour)	
Maximum original size:	A3+	
Output formats:	PDF, JPEG, TIFF	
Bundled drivers:	Network TWAIN	
Scan to e-mail:	Authentication:	SMTP and TCP/IP required
	Destination address selection:	Via LDAP, local address book or direct input
Destination addresses:	Up to 500 from local address book, up to 100 via LDAP	
Stored destination addresses:	Maximum 2,000	
Scan to folder:	Via SMB, FTP or NCP protocol, up to 50 folders per job	



Software

Standard: SmartDeviceMonitor™ for Admin/Client, Web SmartDeviceMonitor™, Web Image Monitor, DeskTopBinder™ Lite, ScanRouter™ Lite, TWAIN driver, Printer utility for Macintosh, Agfa Font Manager

Option: DeskTopEditor For Production, doc-Q-manager, doc-Q-route, Equitrac Office™, MicroPress®

OTHER OPTIONS

4,550-sheet A4 large capacity tray, 4,000-sheet A3 large capacity tray, 550-sheet multi bypass tray, Dual station cover interposer, 3,000-sheet finisher with jogger unit, Punch unit (2/4 switchable hole punch, Scandinavian 4 hole punch), Saddle stitch unit, Professional booklet maker, Z-folder, GBC StreamPunch™, Data Overwrite Security Unit, Copy Data Security Unit, File Format Converter, Copy Connect kit, Browser unit, VM card, Fiery® EB-135 printer/scanner controller

For availability of models, optional apparatus and software, please contact your local Ricoh representative.



ISO9001: 2000 certified
ISO14001 certified

Ricoh believes in conserving the earth's precious natural resources. This brochure is printed on environmentally friendly paper: 50% recycled fibres, 50% chlorine free bleached pulp.

All brand and/or product names are trademarks of their respective owners.

Specifications and external appearance are subject to change without notice. The colour of the actual product may vary from the colour shown in the brochure.

Copyright © 2006 Ricoh Europe B.V. All rights reserved. This brochure, its contents and/or layout may not be modified and/or adapted, copied in part or in whole and/or incorporated into other works without the prior written permission of Ricoh Europe B.V.

RICOH



www.stanfordmarsh.co.uk
info@stanfordmarsh.co.uk | 0844 856 0701

For more information, please contact:

RICOH EUROPE B.V.
P.O. Box 114, 1180 AC Amstelveen,
The Netherlands
Phone: +31 (0)20 54 74 111
Fax: +31 (0)20 54 74 222

www.ricoh-europe.com