



HP Designjet Z6600 Production Printer

The fastest 60-in graphics production printer with efficient operation¹



Designed for speed and productivity

- Print as fast as 1500 ft²/hr (140 m²/hr) in fast mode and 212 ft²/hr (20 m²/hr) in high-quality mode²
- Cut turnaround times and effortlessly handle large data loads thanks to high file-processing power
- Create quality prints at top speed with HP Double Swath Technology and the HP Optical Media Advance Sensor
- Confidently print unattended thanks to long media rolls, 775-ml HP ink cartridges, and a built-in take-up reel

High-impact image quality

- Achieve smooth color tones thanks to HP Multi-dimensional Smart Drop Placement Technology
- Create unique black-and-white prints—three shades of black HP ink deliver rich density and smooth transitions
- Offer your customers durable prints that last up to 200 years, using HP Vivid Photo Inks³
- Print a wide range of jobs—from posters, photos, and signs to canvas and backlit prints—on many substrates

¹ Compared with large-format inkjet printers under \$25,000 USD for graphic applications. Based on the fastest-rated color speeds as published by manufacturers as of October 2013. Test methods vary.
² Using plain paper and fast mode, the HP Designjet Z6600 Production Printer can achieve speeds up to 1500 ft²/hr (140 m²/hr). Using glossy paper and normal mode, the Z6600 can achieve print speeds up to 212 ft²/hr (20 m²/hr).
³ Display permanence rating for interior displays/away from direct sunlight by HP Image Permanence Lab, and by Wilhelm Imaging Research, Inc. on a range of HP media and based on HP Vivid Photo inks. For more information, see globalBMG.com/hp.

Efficient operation with a 6-ink printing system

- Print up to 30% more efficiently, using a 6-ink printing system with an optimized configuration⁴
- Choose how you want to print—send jobs right from your preferred design applications or through third-party RIPs
- Ensure image quality—and reduce cleaning and waste—using automatic drop detection and intelligent masking
- Gain color reliability with HP Professional PANTONE[®] color emulation and embedded Adobe[®] PostScript[®]/PDF⁵

Eco Highlights

- Breakthrough color consistency can help reduce unnecessary reprints
- Free, convenient HP ink cartridge and printhead recycling¹
- FSC[®]-certified papers,² range of recyclable HP media with a take-back program¹
- ENERGY STAR[®] qualified and EPEAT Bronze registered³



¹ Program availability varies. Please check hp.com/recycle for details.
² BMG trademark license code FSC[®]-C115319, see fsc.org. HP trademark license code FSC[®]-C017543, see fsc.org. Not all FSC[®]-certified products are available in all regions.
³ EPEAT registered where applicable/supported. See epeat.net for registration status by country.

Please recycle large-format printing hardware and printing supplies.
Find out how at our website
hp.com/ecosolutions

⁴ The HP Designjet Z6600 Production Printer uses 30% less ink than the HP Designjet Z6100 Printer (demonstrated by internal HP tests on glossy media in production mode).
⁵ HP Professional PANTONE color emulation and embedded Adobe PostScript/PDF upgrade kit sold separately.



1. With Aurasma installed, please go to the HP Designjet channel at <http://auras.ma/s/ke25m>
2. Without Aurasma installed, please download it:
 - a. Google Play - <http://auras.ma/s/android>
 - b. Apple Store - <http://auras.ma/s/ios>Once done, go to the HP Designjet channel at <http://auras.ma/s/ke25m>
3. Open the application and point to the image to view the HP Designjet video

The HP Designjet printing system

Turn orders in record time with the fastest 60-inch production printer for graphics⁶. Efficiently produce outstanding color and black-and-white prints with 6 HP Vivid Photo Inks. Rely on powerful performance from an easy-to-use printer.

Outstanding speed

HP Double Swath Technology provides breakthrough speed and performance. The HP Designjet Z6600 Production Printer includes two sets of three HP 771 and HP 773 Designjet Printheads, creating a wide print swath—up to 1.67 inches/42.5 mm—and a high firing frequency to deliver prints with amazing speed. Six bi-color printheads feature 1,056 nozzles per color, 1200 nozzles per inch, and small drop volumes for top photo quality.



HP Optical Media Advance Sensor (OMAS)

The **HP Optical Media Advance Sensor (OMAS)** allows you to print at top speeds and still get great output results. This breakthrough technology improves paper-advance control and accuracy, so the printer can print at higher speeds across multiple environmental conditions without impairing image quality.

Efficient and unattended operation

Gain efficient operation using a six-ink printing system with an optimized configuration. Print from your favorite design applications or through third-party RIPs. Ensure image quality and reduce cleaning and waste using automatic drop detection and intelligent masking.

The **HP Multi-dimensional Smart Drop Placement Technology** enables the highest quality possible for a 6-ink system while guarding against potential media-feed or drop-placement errors.

The optimal combination of inks for each RGB or CMYK pixel is obtained using a dithering algorithm, which depends on the pixel tone rather than each individual color. Printed results are then optimized in terms of color gamut, smooth color transitions, and minimal image grain. After this step, the resulting image resolution is expanded to control more precisely each drop placement and to spread drops between the different passes using frequency-analysis methods that minimize ink-media interactions (dot visibility, coalescence, bleeding, etc.) and artifacts related to dot-placement errors.

Intelligent masking saves time, ink, and media by reducing reprints and extending printhead life. In multi-pass print modes, dots in every scan row can be printed by different physical nozzles on different passes.

Failing nozzles are identified by the embedded **Optical Drop Detector**. These are then flagged “do not use” because of misdirected drops, weak drops (low drop weight or drop velocity), or non-operation. Only “good” nozzles are used at each print location so banding and image quality defects are eliminated. After printing, the printer automatically performs recovery routines to restore failed nozzles during printhead service station cycles, saving time, ink, and the hassle of manual user interventions.

HP Vivid Photo Inks



HP Vivid Photo Inks

Create impressive long-lasting images in color and black-and white with rich optical density and smooth transitions using **HP Vivid Photo Inks**. Print on many substrates to deliver a wide range of jobs such as posters, canvas prints, and POP signs. HP Designjet printheads are designed together with HP Vivid Photo inks to provide precise, accurate placement of smaller drops and high speed. Each printhead prints two colors of ink with 1,056 nozzles per color.

⁶ Compared with large-format inkjet printers under \$25,000 USD for graphic applications. Based on the fastest-rated color speeds as published by manufacturers as of October 2013. Test methods vary.

Exceptional image quality that increases your offering



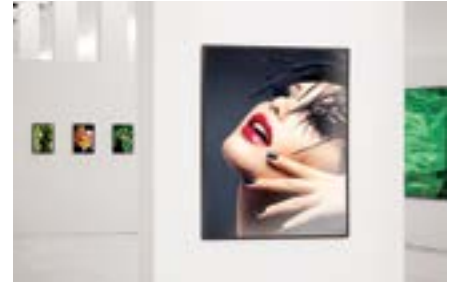
Retail POP/POS

Create appealing advertising posters, displays, window graphics and backlits, that can influence shoppers' decisions. High-quality printing on a wide variety of media can help you gain a competitive edge.



Exhibition and Event Graphics

Grab attention at exhibitions and events with eye-catching top-quality graphics. Print a variety of applications, from roll-up banners and pop-up banners to backlit signs and posters, with outstanding print quality.



Professional Photography and Digital Fine Art

Produce dazzling fine art reproductions for galleries and artists with high-quality digital printing. Long lifespan and fade resistance keep prints in top viewing condition on a range of printing materials from canvas to high-end professional photo and fine art papers.



Maps and Orthophotos

Communicate clearly with excellent image and line quality on all your prints from drawings to satellite and aerial photos, maps, and more.



Renderings, Posters and Presentations

Print large-format drawings, schematics, renderings, and presentations with great ease, speed, sharp details and vibrant quality—all at low running costs.



Line Drawings

Print anything from simple CAD drawings to complex color documents with high speed and outstanding image quality. Bring your vision to life with drawings full of fine detail, enabled by precise line accuracy.

HP-certified RIP solutions

The HP Designjet Z6600 Production Printer and the HP Designjet Z6800 Photo Production Printer offer an exceptional range of HP-certified third-party RIP solutions and workflow products whatever your application needs that will help you meet to your essential performance expectations. Learn more at hp.com/go/DesignjetRIPs.

Trust HP Services

HP Designjet Support Services offer solutions for business critical environments — installation, extended support and maintenance, as well as variety of value-added services. For more information, please visit hp.com/go/designjet/support.

HP Vivid Photo Inks

Use HP Vivid Photo Inks and printheads to experience consistent high-quality and reliable performance that enable less downtime and increased productivity. These critical printing system components are designed and engineered together to provide optimized efficiency, a wide color gamut, and prints with over 200 years fade resistance.⁷ For more information, visit hp.com/go/OriginalHPinks.

For the entire HP Large Format Printing Materials portfolio, please see globalBMG.com/hp.

⁷ Display permanence rating for interior displays/away from direct sunlight, under glass by HP Image Permanence Lab and/or by Wilhelm Imaging Research, Inc. on a range of HP media. See globalBMG.com/hp.

Technical specifications

Print	Max print speed ⁶	140 m ² /hr (1500 ft ² /hr) on plain media
	Color images ⁷	Best: 3.2 min/page on A1/D or up to 13.1 m ² /hr (141 ft ² /hr) on glossy media Normal: 2.1 min/page on A1/D or up to 19.7 m ² /hr (212 ft ² /hr) on glossy media
	Print resolution	Up to 2400 x 1200 optimized dpi
	Margins	5 x 5 x 5 mm (0.2 x 0.2 x 0.2 in)
	Ink types	Pigment-based
	Technology	HP Thermal Inkjet
	Ink cartridges	6 (Cyan, magenta, yellow, light gray, matte black, photo black)
	Line accuracy	+/- 0.1% ⁸
	Minimum line width	0.02 mm (0.0008 in) (HP-GL/2 addressable)
	Guaranteed minimum line width	0.067 mm (0.0026 in) (ISO/IEC 13660:2001(E)) ⁹
Image quality	Color accuracy	Median < 1.25 dE2000, 95% of colours < 2.75 dE2000 ¹⁰
	Short term color stability	< 1 dE2000 less than 5 minutes ¹¹
	Long term print-to-print repeatability	Average < 0.5 dE2000, 95% of colours < 1.25 dE2000 ¹¹
	Maximum optical density	4.5 L* min/2.31 D ¹²
Media	Handling	Roll feed, automatic cutter, take-up reel
	Media types	Bond and coated paper, technical paper, film, photographic paper, proofing paper, backlit, self-adhesive, banner and sign, fabric, fine art printing material
	Size	279 to 1524-mm (11 to 60-in) rolls
	Thickness	Up to 0.56 mm (22 mil)
Applications	Posters, Banners, Mockups, Photos, Digital fine art, Banners, Exhibition, Event graphics, Light boxes – film, Point of sale/display	
Memory	64 GB (virtual) ¹³ , 320 GB hard disk	
Connectivity	Interfaces (standard)	Gigabit Ethernet (1000Base-T), EIO Jetdirect accessory slot
	Print languages (standard)	HP-GL/2, HP-RTL, CALS G4
	Print languages (optional)	Adobe PostScript 3, Adobe PDF 1.7, TIFF, JPEG
	Printing paths	Printer driver, HP Embedded Web Server
	Drivers (included)	HP-GL/2, HP-RTL drivers for Windows; PostScript Windows and Mac drivers with optional PostScript/PDF Upgrade Kit
Dimensions (w x d x h)	Printer	2430 x 690 x 1370 mm (95.7 x 27.2 x 53.9 in)
	Shipping	2700 x 750 x 1200 mm (106.3 x 29.5 x 47.2 in)
Weight	Printer	190 kg (419 lb)
	Shipping	251 kg (553.4 lb)
What's in the box	HP Designjet Z6600 Production Printer, spindle, printheads, introductory ink cartridges, maintenance cartridge, printer stand, take-up reel, 3-in spindle adapter kit, quick reference guide, setup poster, startup software, power cord	
Environmental ranges	Operating temperature	5 to 40°C (41 to 104°F)
	Storage temperature	-20 to 55°C (-4 to 131°F)
	Operating humidity	20 to 80% RH
Acoustic	Sound pressure	53 dB(A) (printing); 39 dB(A) (ready); 39 dB(A) (sleep)
	Sound power	7.0 B(A) (printing); 5.5 B(A) (ready); 5.5 B(A) (sleep)
Power	Consumption	270 watts (printing); < 48 watts (ready); < 5.3 watts (sleep); < 0.3 watts (off)
	Requirements	Input voltage (auto ranging): 100 to 127 VAC (+/- 10%), 5 A; 220 to 240 VAC (+/- 10%), 3 A; 50/60 Hz (+/- 3 Hz)
Certification	Safety	USA and Canada (CSA certified), EU (LVD and EN 60950-1 compliant), Russia (GOST), Singapore (PSB), China (CCC), Argentina (IRAM), Mexico (NYCE), Korea (KC)
	Electromagnetic	Compliant with Class A requirements, including: USA (FCC rules), Canada (ICES), EU (EMC Directive), Australia (ACMA), New Zealand (RSM), China (CCC), Japan (VCCI), Korea (MSIP)
	Environmental	ENERGY STAR, WEEE, RoHS (EU, China, Korea, India), REACH, EPEAT Bronze
Warranty	One-year limited hardware warranty	

⁶ Mechanical printing time. Printed in Fast mode with HP Vivid Photo Inks.
⁷ Mechanical printing time. Printed with HP Vivid Photo Inks.
⁸ +/- 0.1% of the specified vector length or +/- 0.2 mm (whichever greater) at 23°C (73°F), 50-60% relative humidity, on A0/E HP Matte Film in Best or Normal mode with HP Vivid Photo Inks.
⁹ Measured on HP Matte Film.



For more information, please visit hp.com/go/DesignjetZ6600

© Copyright 2014 HP Inc., L.P. The information contained herein is subject to change without notice. The only warranties for HP products and services are set forth in the express warranty statements accompanying such products and services. Nothing herein should be construed as constituting an additional warranty. HP shall not be liable for technical or editorial errors or omissions contained herein.

Adobe, PostScript, and Adobe PostScript 3 are trademarks of Adobe Systems Incorporated. ENERGY STAR and the ENERGY STAR mark are registered U.S. marks. Windows is a U.S. registered trademark of Microsoft Corporation. Mac and the Mac logo are trademarks of Apple Computer, Inc., registered in the U.S. and other countries. PANTONE is the property of Pantone, Inc.

Ordering information

Product	F2571A	HP Designjet Z6600 60-in Production Printer	
Accessories	G6H51A	HP Designjet HD Pro Scanner	
	CQ745B	HP Designjet PostScript/PDF Upgrade Kit	
	CQ754A	HP Designjet 60-in Spindle	
	J8025A	HP Jetdirect 640n Print Server	
	Q6714A	HP Designjet 60-in Media Bin	
	Q6715A	HP Designjet User Maintenance Kit	
	E2P02A	HP SmartStream Preflight Manager for HP Designjet ¹⁴	
	K3L60A	HP SmartStream Print Controller for HP Designjet Z6200/Z6600/Z6800 Production Printers ¹⁴	
	Original HP printheads	C1Q20A	HP 773 Matte Black and Cyan Designjet Printhead
		CE018A	HP 771 Magenta and Yellow Designjet Printhead
	CE020A	HP 771 Photo Black and Light Gray Designjet Printhead	
Original HP ink cartridges and maintenance supplies	C1Q37A	HP 773C 775-ml Matte Black Designjet Ink Cartridge	
	C1Q39A	HP 773C 775-ml Magenta Designjet Ink Cartridge	
	C1Q40A	HP 773C 775-ml Yellow Designjet Ink Cartridge	
	C1Q42A	HP 773C 775-ml Cyan Designjet Ink Cartridge	
	C1Q43A	HP 773C 775-ml Photo Black Designjet Ink Cartridge	
	C1Q44A	HP 773C 775-ml Light Gray Designjet Ink Cartridge	
	CH644A	HP 771 Designjet Maintenance Cartridge	
Original HP large format printing materials	Q8000A	HP Premium Instant-dry Satin Photo Paper (FSC® certified) ¹⁵ 1524 mm x 30.5 m (60 in x 100 ft)	
	Q6578A	HP Universal Instant-dry Gloss Photo Paper (FSC® certified) ¹⁵ 1524 mm x 30.5 m (60 in x 100 ft)	
	Q8707A	HP Artist Matte Canvas 1524 mm x 15.2 m (60 in x 50 ft)	
	Q8750A	HP Premium Vivid Colour Backlit Film ¹⁷ 1524 mm x 30.5 m (60 in x 100 ft)	

Service and support

H4518E	HP Installation Service with Network Setup
U1ZM7E	HP 2 years Next Business Day Onsite Support with DMR*
U1ZM8E	HP 3 years Next Business Day Onsite Support with DMR*
U1ZM9E	HP 5 years Next Business Day Onsite Support with DMR*
U1ZN0PE	HP 1 years Post Warranty, Next Business Day Onsite Support with DMR*
U1ZN1PE	HP 2 years Post Warranty, Next Business Day Onsite Support with DMR*
U1XV4E	HP Preventive Maintenance Service

* Defective Media Retention keeps your sensitive data safe. To comply with security regulations you can keep the defective hard-drive or data-retentive memory component while getting a new replacement disk or memory.

HP Designjet Support Services offer solutions for business critical environments — installation, extended support and maintenance, as well as variety of value-added services. For more information, please visit hp.com/go/designjetsupport.

Use HP Vivid Photo Inks and printheads to experience consistent high-quality and reliable performance that enable less downtime and increased productivity. These critical printing system components are designed and engineered together to provide optimized efficiency, a wide color gamut, and prints with over 200 years fade resistance.¹⁸ For more information, visit hp.com/go/OriginalHPInks.

For the entire HP Large Format Printing Materials portfolio, please see globalBMG.com/hp.

¹⁰ ICC absolute colorimetric accuracy on HP Premium Instant Dry Photo Paper with Original HP inks.
¹¹ With HP Premium Instant-dry Gloss Photo Paper and Original HP inks, right after calibration.
¹² With HP Premium Instant-dry Gloss Photo Paper with HP Vivid Photo Inks.
¹³ Based on 1 GB RAM. Expandable to 1.5 GB RAM through a Designjet qualified SODIMM included only in the optional HP Designjet PostScript/PDF Upgrade Kit accessory.
¹⁴ HP Designjet SmartStream only support PostScript printers. If your printer requires an accessory to handle PostScript, you must install the accessory to use the printer with HP Designjet SmartStream. For further up-to-date information, see hp.com/go/designjetsmartstream.
¹⁵ BMG trademark license code FSC®-C115319, see fsc.org. HP trademark license code FSC®-C017543, see fsc.org. Not all FSC®-certified products are available in all regions.
¹⁶ In Asia (including Japan), recyclable in consumer collection systems that can accept mixed paper (may not be recyclable in your area).
¹⁷ HP Large Format Media take-back program availability varies. Recycling programs may not exist in your area. See hp.com/recycle for details.
¹⁸ Display permanence rating for interior displays/away from direct sunlight, under glass by HP Image Permanence Lab and/or by Wilhelm Imaging Research, Inc. on a range of HP media with Original HP inks. See globalBMG.com/hp.

