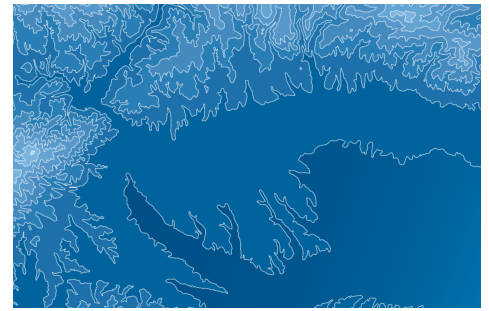


Contex SD Series
top-rated by



Contex SD4400

SD large format scanners give companies an easy and affordable way to save time on in-house scanning activities. You get exceptional professional-grade performance with true 1200dpi optical resolution with speeds of up to 10 inch/second. The Contex SD4400 series is designed for high-volume productivity for businesses-critical imaging tasks. Whether you are a private business or government, Contex's range of SD4400 scanners is the right solution for improved efficiency and productivity. The 44" imaging area is designed to produce clean, sharp image quality on technical documents, sketches, and maps. Fast, simple image clean-up on old, faded, or poorly shaded documents, and safe handling of sensitive originals with no data loss in capture. Expand your business opportunities with Contex's versatile SD4400 scanners

See more at www.contex.com

Key Features

- 1200dpi optical resolution, standard
- All-Wheel-Drive (AWD) for a perfect grip on your documents
- Exceptional Productivity, scanning up to 336 D-size color documents per hour (324 A1/hour)
- See what you scan with face-up scanning
- Scan-to-Net function for scanner sharing across a network, and sending files to remote PCs
- ENERGY STAR compliant, using less than 5W in standby

Lightweight scanner in a sleek and modern design making transport and setup an easy task.



Experience the competitive edge with true 1200dpi optical resolution and fast USB2 with xDTR.

Value for Money

Contex makes it easy to scan technical documents, maps and drawings. The SD4400 series is built to withstand high-volume use on daily basis and is available in a sleek and lightweight design. With SD4400 you get a total scanning solution with leading-edge software that fits with your existing tools and business processes.

Ease of Use and Productivity

Instant-on scanning and one-touch interface saves time in loading and scanning large documents. Nextimage software and WIDEsystem drivers make scanning to file, to print, or to the network fast and simple. Intuitive software makes the scanner easy to use and maintain.

SPECIFICATIONS: Contex SD4400 Solution

Scanner	Contex SD4410	Contex SD4430	Contex SD4450	Contex SD4490
Optical Resolution	1200dpi	1200dpi	1200dpi	1200dpi
Maximum Resolution	9600dpi	9600dpi	9600dpi	9600dpi
Maximum Scan Width	44in. (1118mm)	44in. (1118mm)	44in. (1118mm)	44in. (1118mm)
Maximum Media Width	47in. (1194mm)	47in. (1194mm)	47in. (1194mm)	47in. (1194mm)
Maximum Media Thickness (flexible documents only)	0.08-inch (2mm)	0.08-inch (2mm)	0.08-inch (2mm)	0.08-inch (2mm)
Accuracy	0.1% +/- 1 pixel	0.1% +/- 1 pixel	0.1% +/- 1 pixel	0.1% +/- 1 pixel
Data Capture (color/mono)	NA/16-bit	48-bit/16-bit	48-bit/16-bit	48-bit/16-bit
Color Space	NA	sRGB	sRGB	sRGB
Interface	USB 2.0 with xDTR	USB 2.0 with xDTR	USB 2.0 with xDTR	USB 2.0 with xDTR
Power Requirements	110/220/240V, 60/50Hz, 180W			
Power, Operational / Sleep mode	less than 20W / less than 2W - ENERGY STAR compliant			
Weight & Dimensions LxWxH	30 kg (66 lbs) / 60 x 19 x 6.3 inches (153 x 48 x 16 cm)			
Certifications/compliance	ENERGY STAR, RoHS, UL, CE, GOST-R, CCC, VCCI, KETI, BSMI, FCC: CLASS B			



Software	Nextimage 30-day trial included
Device Drivers	32 and 64-bit Windows 7, XP and Vista
TWAIN	TWAIN driver included for use with EDM and other imaging software

Scanning Speed* (inch/sec.):	Scanner speed while scanning 36-inch wide document.			
400dpi (Turbo) RGB Color		1.0	1.5	3.0
400dpi (Turbo) Index Color		1.0	1.5	3.0
400dpi (Turbo) Grayscale/Monochrome	10.0	5.0	10.0	10.0

Productivity** (documents/hour):	Batch scanning for 60 minutes. Includes paper load and eject time. Measured in completed scans.			
D-size, RGB Color, 200dpi		136	198	336
D-size, Monochrome, 200dpi	780	516	780	780
A1-size, RGB Color, 200dpi		132	192	324
A1-size, Monochrome, 200dpi	744	744	744	744

* Scanning speeds depend on document width and computer configuration. For best performance, Contex recommend s Intel Core Duo, Core 2 Duo, or better processors, 2GB RAM, H i-speed USB2
 ** Scanning speed tests performed using Nextimage software, PC with intel Core 2 Quad processor , 3GB RAM, Hi-speed USB2, 7200rpm SATA hard drive, Windows XP Professional.

See our entire product range and download further details at www.contex.com