



Contex **HD** series  
Professional Imaging Solutions

## Complete business-enhancing imaging solutions



**“Our Contex scanners have made us a much stronger player in the niche. What used to be a 2-4 hour job now takes 8-12 minutes.”**

Philip Burgess,  
Manager, Scanning Services

Whether you work primarily with scan to file or scan to print and copy applications, our solutions deliver results you can measure on your bottom line. Contex HD Series scanners intelligently handle your documents, give you unparalleled levels of detail, ensure absolute accuracy – and are durable enough to handle thousands of scans per day, for years to come.

### HD series highlights include:

- **RESOLUTION:** True 600dpi optical resolution standard on most models
- **PRECISION:** outstanding image quality thanks to industry-best resolution and 0.1% ±1 pixel accuracy
- **OPTIONS:** scan width from the ultra-wide 54” HD5450 to the flexible 18”x24” FLEX50i flatbed
- **SPEED:** fastest scanning speeds available in wide format - up to 12” per second. Improved USB interface with xDTR
- **PRINTER INTEGRATION:** compatibility with most large format printers, including HP, Canon, Epson, Xerox, Mutoh, and many others

Our software solutions help you get the most out of your scanner with intuitive interfaces, advanced data management and image editing capabilities, and much more. So scanning becomes faster and easier than ever – and what you put into your scanner is exactly what you get out of it.

### Scanning solutions

Contex HD Series scanners are an integral part of any complete scan-to-print, scan-to-file or scan-to-net solution. We recognize that every industry’s demands are unique, and that your requirements vary depending on the types of documents you work with. So we offer a range of solutions, allowing you to choose the balance of speed, quality and simplicity you need to get your job done right.

#### Technical documents

If you scan a lot of technical documents, you need a precise scanner that consistently captures all essential drawing details with point-to-point accuracy. Contex does all that, and does it faster. For the CAD and AEC markets, this means that small type and other details are captured clearly thanks to high-quality scanner components and a unique design. And manufacturing and utilities specialists can scan and file oil well logs, CAD drawings, geological maps and seismographic prospecting information with precision and ease. Contex solutions make it simple to create online access and control of vital company assets such as drawings, electrical schematics and facility plans.

#### GIS and mapping documents

If you primarily scan geographic data and maps, you need a scanner that provides point-to-point accuracy, vivid color and sharp detail. GIS, mapping and utilities professionals trust our scanners to help them capture all small type, details and color changes in maps. And government agencies rely on our scanners and software to help modernize their archiving systems and infrastructure for more efficient workflow operations.

#### Graphics documents

Work with graphics, fine art, or photography? Contex large format scanners handle these documents with care – regardless of format, size and media – while capturing all colors and details, so you always get perfect reproductions of your originals.

#### Other document types

Whether it’s textile patterns, books, legal documents or other specialized media types, our scanning solutions will make your job faster and easier, and deliver impressive results. With a choice of 8 HD Series scanner models and 15 different configurations, you can be sure you’ll get a solution that meets your needs.

#### Solutions for copy shops and reprographics

Contex large format scanning solutions help copy shops increase productivity – and profitability. Versatile, fast, and as high performing as you are demanding, our scanners always deliver the image quality your customers are looking for. And with built-in support for your large format printer, they fit right in with your existing equipment and your way of working.

Designed with state-of-the art technology, HD Series scanners not only offer excellent performance and color handling abilities, but also dramatically reduce your maintenance time.

Scanning and copying solutions  
developed to meet your demands



## The intelligence behind higher performance

### Beautiful images – every time

Behind every perfect Contex scan, there are multiple intelligent technologies working together to ensure every aspect of your image is just right.

#### Unmatched resolution

Resolution is one of the most important performance indicators for a scanner. The Contex HD3600 and HD4200 scanners have true 600 dpi optical resolution and enhanced resolutions of up to 9600 dpi. At Contex, 600 dpi optical resolution means more than just a number. Our scanners utilize 48-bit color, 4-channel CCDs, and high-quality, full-sized professional camera lenses to ensure every scan is sharp and accurate. Combining these components with built-in advanced algorithms for processing image data separates every Contex HD scanners from the competition.

#### On-board image processing

Only Contex scanners contain on-board image processing technology. A unique combination of processors and imaging algorithms is at the heart of every Contex HD scanner, performing the complex data processing that ensures intelligent image capture and cleanup. With this technology built into the scanner, the PC is free to run software applications more efficiently by removing the need for post-scan processing.

#### True-to-life color and monochrome

With Contex, you can be certain that you never lose data – no matter what you're scanning. Our scanners offer 48-bit enhanced color capture, transferring only the best 24-bit color data to the computer, and 16-bit monochrome image capture to bring out the depth and details in any drawing.

#### Powerful, proven CCD technology

Contex all-digital cameras with advanced point-of-origin capture and on-board digital conversion ensure minimum noise and an extended dynamic range. Our unique four-linear CCD technology, with a special panchromatic line, provides 16-bit greyscale. And our high-quality, color-matched fluorescent lamps meet the highest color accuracy standards with a CRI > 95.

#### Accurate Lens Enhancement Technology (ALE)

Our patented ALE technology lifts your scanning precision to new heights, electronically maintaining 0.1% ±1 pixel precision – the highest in the industry – across any two points on a line.

#### Precision color system

New wide format scanners come fully-calibrated for optimal color output. But as time goes by, components and lamps deteriorate, affecting color output. Our unique precision color system helps you maintain perfect color results. You can calibrate your scanner anytime to maintain consistent color output.

### Making every scanning task easier

We know that scanning large or difficult documents can be a complex task. So we've optimized our hardware and software to make it as user-friendly and efficient as possible. Our solutions can't do all the work for you, but they come close.

#### Faster scanning with xDTR

Along with unmatched accuracy, our scanning solutions deliver the fastest scanning on the market at up to 12 inches per second. The HD Series also introduces an improved USB 2.0 interface with xDTR (Extended Data Transfer Rate) providing more speed when you need it most - on wider documents. Upgrade to the PLUS model and you get even more speed and 9600dpi maximum resolution.

#### Instant-on

With Contex HD scanners, you don't have to wait for the scanner to warm up before you insert your first original. In

most cases, your scanner will be in sleep mode – and will wake up immediately when you need it, ready to scan. If the scanner is powered off, its warm up time is a mere five minutes - a small price to pay for superior image results.

#### All Wheel Drive

Every Contex HD scanner is equipped with All Wheel Drive (AWD) – a precision paper feed tracking system that ensures a perfectly straight scanning path – and distortion-free scans. It doesn't matter if you're scanning fragile, old documents or heavy, thick documents – AWD ensures proper document transport from beginning to end. The contour adjustment and broad synchronized rollers maintain the path without using unnecessary force, so you avoid image distortion and protect your valuable originals.

#### One-touch functionality

The operator panel on every Contex scanner lets you perform common tasks directly from the scanner with convenient, programmable action buttons. The scanner



HD Series brings a new look to the industry's fastest and most flexible wide format scanners, while adding even more speed and 600dpi optical resolution.



Designed to deliver  
world-class image quality

## The intelligence behind higher performance

comes with buttons for scanning, copying and e-mailing loaded originals, which can all be easily reconfigured for other tasks.

### Simpler copying

Combine a Contex HD scanner with a wide format printer to create a complete wide format color and monochrome digital color copier. Thanks to our scanners' high detail and color precision, you can print captured images in full display sizes without losing image quality. Using JETimageNET copy software with specialized closed-loop calibration or ICC precision color management, you can easily color-match the printer output to the original. Contex HD Series scanners also offer special monochrome copying modes.

### Automatic Thickness Adjustment Control (ATAC)

With this feature, Contex lets you scan originals up to 0.6" (15 mm) thick with the touch of a button. Sensors in the scanner monitor the pressure on the document surface and adjust the guide plate accordingly.

### Easy, flexible connections

Contex makes it easy to connect your scanner with high-speed USB2, FireWire, and LAN interface options. Contex

scanners also have built-in support for Still Image Interface (STI) and Windows Imaging Architecture (WIA), ensuring compatibility with current and future versions of Windows.

## The zero-maintenance solution

### Automatic scanner maintenance

The Contex Scanner Maintenance software automatically keeps your cameras perfectly aligned and calibrated to the fraction of a pixel. All you have to do is insert the maintenance sheet and click the wizard's start button. Using patented Contex technology, camera stitching and black/white-points are constantly monitored and corrected while your scanner is powered on, letting you concentrate on your work.

### Fast, easy parts replacement

With Contex, vital scanner parts replacement is quick, easy and hassle-free. Your Contex system monitors vital parts, such as the glass-plate, lamp, dust filters and white background, and lets you know when it's time to consider a replacement. The advantage? You save time and money on technical service – and keep your business running without costly delays.

## Greener scanning

### Energy efficiency

Contex HD Series scanners are ENERGY SAVER-compliant. This means the scanners automatically enter a low-power sleep mode after a period of inactivity, saving energy and helping the scanner equipment stay cool so it lasts longer. Contex's automatic power-down function supports international low power value criteria. Contex scanners offer a standard timer clock setting feature, enabling you to set the power-up and power-down in WIDESystemNET to fit the needs of your business and applications.

### RoHS compliance

Contex scanners are completely lead-free, meeting the RoHS European Market strict requirements for maximum levels for potentially dangerous substances in products with electronic components.



True 600dpi optical resolution provides the the highest level of detail ever in wide format.



Proven 48-bit CCD technology provides better image quality than any other imaging technology available



From 25 to 54-inch, sheetfed to flat-bed, Contex has the right scanner for your business needs

Image Quality > Performance > Flexibility



## Software that transforms the way you work

### SCAN WIDEimageNET

Full-featured software for scanning

User-friendly, powerful and easy to integrate with other software, WIDEimageNET lets you scan, view, print, convert, and edit any images with ease. It offers multiple scanning modes and a feature extraction editor, and supports over 50 industry-standard file formats, including PDF, JPG, and TIFF.

WIDEimageNET's fast scan-to-disk capabilities make it the perfect link between your Contex HD Series scanner and popular software for graphics, reprographics, GIS, CAD, DTP, and archiving. And the integrated TWAIN driver enables you to use the scanner with your favorite archiving or imaging software.

WIDEtwin has all the same scanning functions as WIDEimageNET and imports images into any TWAIN-compliant software.

- Full support for Contex scanners
- Advanced batch scanning and conversion
- Powerful editing tools
- Intelligent monochrome clean-up
- Full compatibility with most large format printers
- Ensures fast, high-quality large format printing
- Ultra-fast scan to file
- Scan to PDF
- Scan to net (also across the Internet)

### COPY JETimageNET

Full-featured software for copying

Recognized in the industry for its ease of use, JETimageNET software is the ultimate tool for professionals in reprographic and copy shops. JETimageNET is designed especially for fast, flexible large format copying. It delivers high-quality, color-matched color copies and clean, accurate monochrome copies.

Combine a Contex HD scanner, large format printer and JETimageNET for a highly effective yet easy-to-operate copy machine.

JETimageNET supports most large format printers and both traditional keyboard/mouse and touchscreen interfaces.

- Perfect copies in five easy steps
- Precise color matching for vivid, high-quality color copies
- Clean, accurate monochrome copies
- Automatic size detection for fast and easy copying
- Supports touchscreens
- Fully compatible with most large format printers
- Easy networking (also across the Internet) with scan, copy, and print to net
- Scan-to-file, print-from-file or direct scan-to-print output
- Scan to PDF

### NETWORK WIDEsystemNET

The technology that lets you share

WIDEsystemNET contains scanner drivers and a control interface, making it easy to integrate your wide format scanner with Windows and your overall system. It also lets you see your scanner's status through a status icon in the system tray.

The WIDEsystemNET driver software included with Contex scanners can be combined with both WIDEimageNET and JETimageNET software to enable your company to share one or more scanners across departments – regardless of their locations. If your scanning workstation is on the network, the workstation acts as a scanning server and becomes accessible to any other network PCs running WIDEsystemNET and other Contex application software. Any network user can see and use the scanner as easily as if the scanner were connected directly to the user's PC. The scan-to-net feature also allows users to send scans directly to specific computers on the LAN. All these settings are easy to configure with the WIDEsystemNET settings panel.

### Software Solutions

**WIDEimage**<sup>NET</sup>

**JETimage**<sup>NET</sup>

**WIDEsystem**<sup>NET</sup>

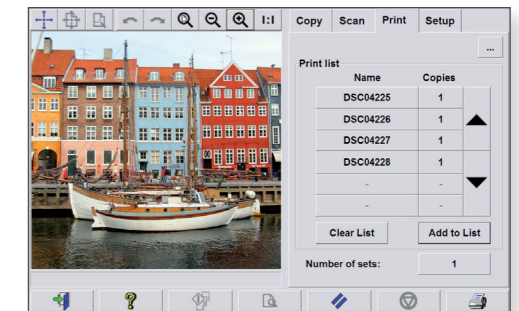
**WIDEmail**

**WIDECapture** for Adobe Photoshop

**WIDECapture** for AutoCAD

**Scanner Maintenance Software**

**WIDEtwin** TWAIN import



JETimage Professional Copy software supports touch-screens and most wide format printers



As the leading manufacturer of wide format scanners, Contex is also supported by many more imaging software packages than the competition



Unlock the full potential  
of your Contex HD scanner

## Product specifications

SPECIFICATIONS		Contex HD2530	Contex HD3630	Contex HD3650	Contex HD4230	Contex HD4230i	Contex HD4250	Contex HD5450	Contex FLEX50i
Optical Resolution		424dpi	600dpi	600dpi	600dpi	600dpi	600dpi	508dpi	400dpi
Maximum Resolution	(BASE/PLUS)	1200/9600dpi	1200/9600dpi	1200/9600dpi	1200/9600dpi	1200/9600dpi	1200/9600dpi	1200/9600dpi	1200/9600dpi
Maximum Scan Width	inches (mm)	25 (635mm)	36 (914mm)	36 (914mm)	42 (1067mm)	42 (1067mm)	42 (1067mm)	54 (1372mm)	18x24 (457x610mm)
Maximum Media Width	inches (mm)	28 (711mm)	44 (1118mm)	44 (1118mm)	44 (1118mm)	44 (1118mm)	44 (1118mm)	56 (1420mm)	unlimited
Maximum Media Thickness	via ATAC (except HD2530)	0.6" (15mm)	0.6" (15mm)	0.6" (15mm)	0.6" (15mm)	0.6" (15mm)	0.6" (15mm)	0.6" (15mm)	unlimited
Accuracy		0.1% ± 1pixel	0.1% ± 1pixel	0.1% ± 1pixel	0.1% ± 1pixel	0.1% ± 1pixel	0.1% ± 1pixel	0.1% ± 1pixel	0.1% ± 1pixel
Scanning Speeds:	(inches/second)								
	400dpi (turbo), 24-bit RGB color (BASE/PLUS)	0.5/1.5	0.6/1.0	1.5/3.0	0.6/1.0	0.6/1.0	1.5/3.0	1.5/3.0	3.0
	400dpi (turbo), 8-bit Index color	1.5	1.5	3.0	3.0	3.0	3.0	3.0	3.0
	400dpi (turbo), 8-bit Grayscale	4.0	12.0	12.0	12.0	12.0	12.0	12.0	5.0
	400dpi (turbo), 1-bit Monochrome	4.0	12.0	12.0	12.0	12.0	12.0	12.0	5.0
Interface:									
	High Speed USB 2.0 with xDTR		✓	✓	✓		✓	✓	
	High Speed USB 2.0	✓				✓			✓
	FireWire (IEEE1394)	✓							
	Ethernet (LAN)					✓			✓
	Remote HTML Control					✓			✓
Power	Low Power (Sleep) Mode, Programmable Power-up/down Timer	Requirements: 110V/220V/240V, 60/50 cs, 180W							
Weight		95 lbs. 43 kg	134 lbs. 61 kg	134 lbs. 61 kg	134 lbs. 61 kg	134 lbs. 61 kg	134 lbs. 61 kg	174 lbs. 79 kg	82 lbs. 37 kg
Dimensions		39 x 19 x 7 in 98 x 47 x 18 cm	55 x 19 x 7 in. 139 x 46 x 18 cm	55 x 19 x 7 in. 139 x 46 x 18 cm	55 x 19 x 7 in. 139 x 46 x 18 cm	55 x 19 x 7 in. 139 x 46 x 18 cm	55 x 19 x 7 in. 139 x 46 x 18 cm	67 x 19 x 7 in. 169 x 46 x 18 cm	50 x 25 x 9 in. 128 x 63 x 22 cm
Device Drivers		Microsoft Windows XP, Server 2003, Vista (32-bit versions)							

As the world's largest developer and producer of large format imaging solutions, Contex leads the market with innovative technology and advanced scan and copy software applications. Sold worldwide in over 80 countries, Contex solutions are recognized in a wide range of industries for reliability, value, high performance, and superb image quality.

Head Office  
CONTEX A/S  
2 Svanevang  
DK-3450 Allerød  
Denmark  
Phone: +45 4814 1122  
Fax: +45 4814 0122  
E-mail: [info@contex.com](mailto:info@contex.com)

USA  
CONTEX Scanning Technology Inc.  
Suite P, 14100 Parke - Long Court  
Chantilly, VA 20151  
USA  
Phone: +1 (703) 378 2209  
Fax: +1 (703) 378 0036  
E-mail: [info@contex.com](mailto:info@contex.com)

Japan  
CONTEX  
Yokohama Landmark Tower 30th Floor  
2-2-1 Minato-Mirai  
Nishi-ku  
Yokohama 220-8130  
Japan  
Phone: +81 45-224-3272  
Fax : +81 45-224-3274  
E-mail: [info@contex.com](mailto:info@contex.com)

China  
CONTEX A/S Shanghai Representative Office  
Room 801, Jin Tian Di International Mansion  
998 Renmin Road, 200021, Shanghai  
China  
Phone: +86 21 6311 0808  
Fax: +86 21 6336 3060  
E-mail: [info-china@contex.com](mailto:info-china@contex.com)

[www.contex.com](http://www.contex.com)

  
**STANFORD MARSH**  
STANFORD MARSH GROUP | [www.stanfordmarsh.co.uk](http://www.stanfordmarsh.co.uk)  
[info@stanfordmarsh.co.uk](mailto:info@stanfordmarsh.co.uk) | 0844 856 0701

